

CHASSIS SYSTEM
USER MANUAL

STRIKE SERIES

DUAL/LITE STRIKE





Important usage information for:

Rev. 2.1 - 20220113

CADEX DUAL/LITE STRIKE CHASSIS

If you have any remark about your new Cadex chassis, please contact us:

Cadex Inc.
755 avenue Montrichard, Saint-Jean-sur-Richelieu
Quebec, Canada J2X 5K8
Phone: 450-348-6774
www.cadexdefence.com

Please use the following spaces to record information about your new firearm.

Model: _____

Serial number: _____

Bought from: _____

Purchase date: _____

Thank you for choosing a Cadex DUAL/LITE Strike Chassis

Congratulations on your choice of a Cadex DUAL/LITE Strike Chassis. The Cadex chassis are one of the most accurate, sophisticated and finest constructed bolt-action rifles chassis available today. The Cadex chassis represents a new generation of chassis, designed with improved features for superior performance. With proper care, your Cadex Chassis should give you many years of dependable, enjoyable service.

YOU ARE RESPONSIBLE FOR FIREARM SAFETY

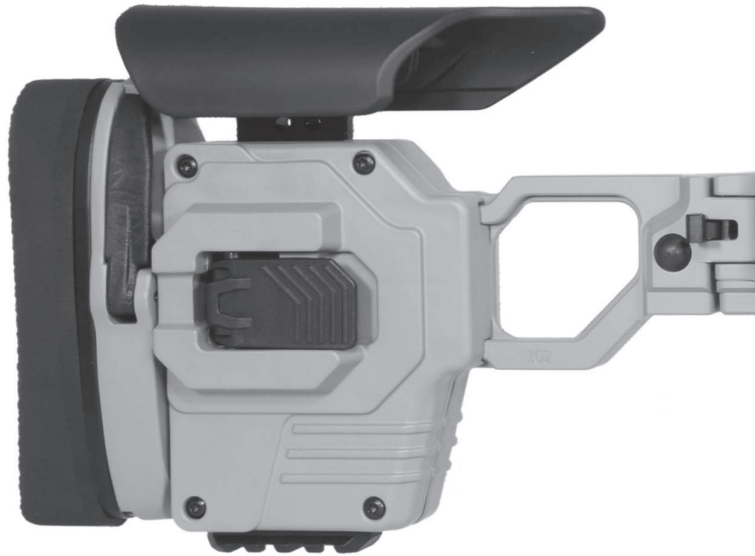
Failure to heed any of the following warnings could result in serious injury or death. As a gun owner, you accept a set of demanding responsibilities. How seriously you take these responsibilities can be the difference between life and death. There is no excuse for careless or abusive handling of any firearm. At all times handle this firearm, and all other firearms, with intense respect for their power and potential danger. Please read and understand all of the cautions, warnings, notices, proper handling procedures and instructions outlined in this user manual before using your new chassis.

WARNING! Any modifications and/or disassembly of chassis other than those described in this manual could void the warranty.

This document contains information that is proprietary to Cadex Inc. Neither this document nor the information contained herein shall be used, duplicated or communicated by any means to any third party, in whole or in part, except with the prior written consent of Cadex Inc. This restrictive legend shall not be altered or obliterated from this document.

Contents

1.	CADEX CHASSIS FEATURES	5
1.1.	Folding stock series	5
1.2.	Dual Strike	6
1.3.	Lite Strike	6
1.4.	Lite Competition	6
2.	CADEX DUAL/LITE STRIKE CHASSIS SPECIFICATION	7
2.1.	Chassis description	7
2.2.	Chassis installation	8
	Overview	8
A.	Removal of detachable base	8
B.	Installation of the action into the chassis	9
C.	Installation of detachable base and magazine sleeve	11
D.	Installation of fore-end tube	12
E.	Installation of top rail (if equipped)	13
2.3.	Operation of stock controls (Dual and Lite Strike)	14
A.	Adjusting length of pull	14
B.	Adjusting the length of pull locking mechanism	14
C.	Adjusting height of cheek piece	15
D.	Adjusting height of recoil pad	15
2.4.	Operation of stock controls (Lite Competition)	16
A.	Adjusting length of pull	16
B.	Adjusting height of cheek piece	16
C.	Adjusting height of recoil pad	17
2.5.	Folding, extending and tightening the butt stock	17
2.6.	Chassis disassembly	19
A.	Top rail and fore-end tube disassembly	19
3.	CLEANING AND MAINTENANCE	21
3.1	Chassis maintenance	21
3.2	Threadlocker application procedure	21
4.	TECHNICAL AND WARRANTY SUPPORT	21
5.	APPENDIX A - SPARE PARTS	23
5.1	Dual/Lite Strike spare parts (1/2)	23
5.1	Dual/Lite Strike spare parts (2/2)	24
5.2	Dual Strike 0.50 cal spare parts (1/2)	25
5.2	Dual Strike 0.50 cal spare parts (2/2)	26
5.3	Butt stock spare parts	27
5.4	Skeleton butt stock spare parts	28
6.	APPENDIX B - RECOMMENDED TORQUE SETTING	29



The complete disassembly of the chassis butt stock internals and folding stock mechanism by customer could void the warranty.

This Cadex butt stock and folding mechanism has been installed and fine tuned to its optimum fit by qualified technician. Any attempt to disassemble them is prohibited.

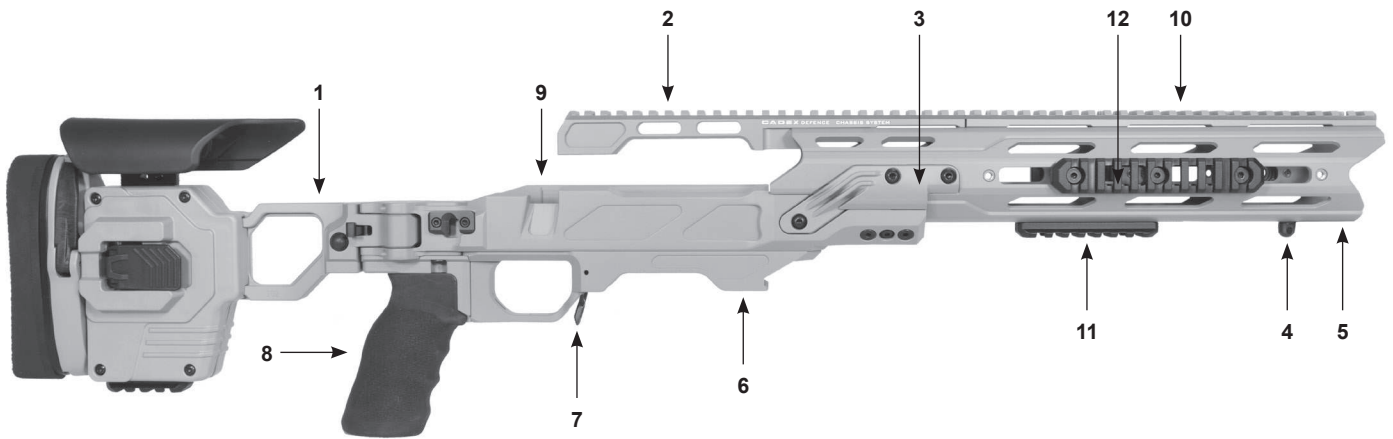
If you experience some problem with your chassis other than standard care & maintenance please contact our customer service.

1. CADEX CHASSIS FEATURES

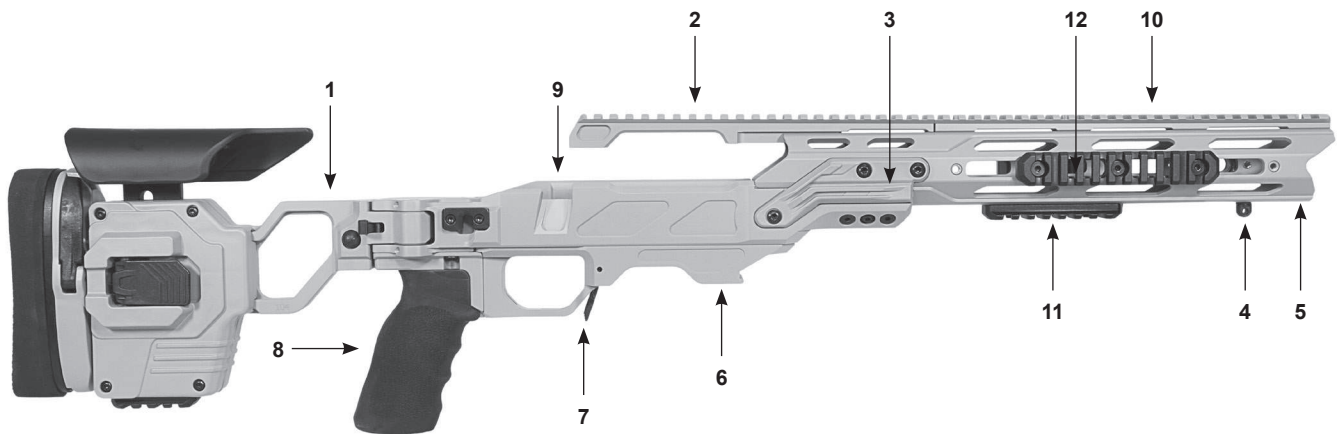
1.1. Folding stock series

FOLDING STOCK	STKDL / Dual Strike / S/A L/A .50	  Optional Skeleton Stock
	STKLT / Lite Strike / S/A L/A	  Optional Skeleton Stock
	STKLCP / Lite Competition / S/A L/A	

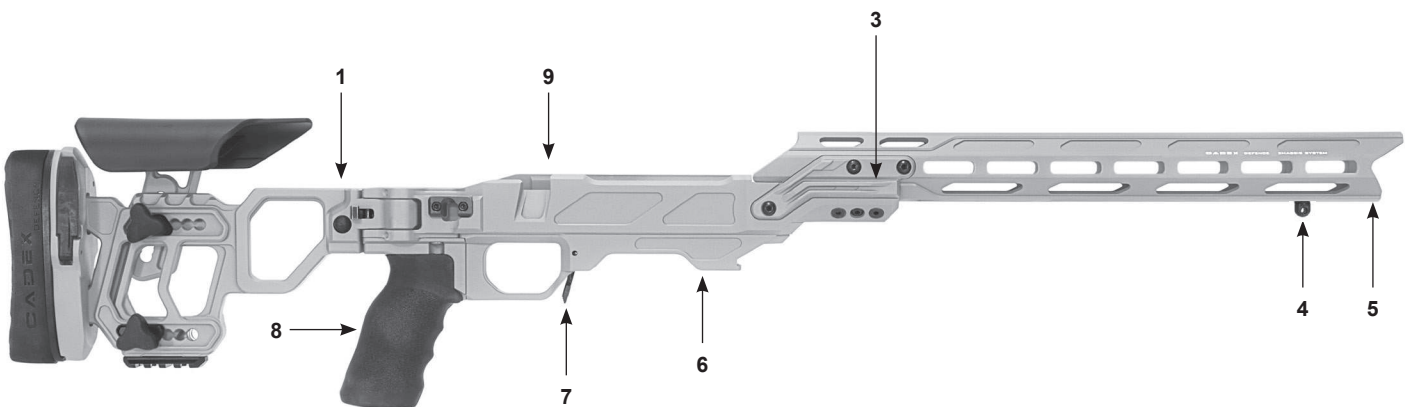
1.2. Dual Strike



1.3. Lite Strike



1.4. Lite Competition



KEY	PART	FUNCTION
1	Folding butt stock	Provides a shoulder rest adjustable for LOP and cheek rest that adjusts for elevation required to align operator's aiming eye with various optical sighting systems.
2	Receiver top rail	Bolts to rifle receiver to provide stable MIL-STD-1913 mounting rail for attaching various optical sights.
3	Side plates	Provides attachment between the hand guard tube and the lower receiver.
4	Bipod stud / Sling swivel	Provides a means to attach various types of bipods or rifle slings.
5	Hand guard tube	Shields the barrel, serves as a rifle fore-end, provides attachment for bipod, sling and various other rail mounted lights, pointers or other accessories.
6	Detachable base	Allows to secure magazine in place. When removed, provides access to trigger group.
7	Magazine catch	Retains and releases the magazine.
8	Pistol grip	Provides a control grip for the firing hand.
9	Lower receiver	Provides attachment point for the receiver to the chassis.
10	Hand guard top rail	Bolts to hand guard tube to provide stable MIL-STD-1913 mounting rail for attaching various optical sights or night vision sights or devices.
11	Bipod rail	Provides a means to attach various types of bipods.
12	Side rail	Provides a means to attach various types of accessories.

2. CADEX DUAL/LITE STRIKE CHASSIS SPECIFICATION

2.1. Chassis description

1. The Cadex Dual/Lite Strike chassis is an integrated system to enhance the handling and portability of sniper rifles. The chassis is designed to make the sniper rifle a modular system that allows the sniper to tailor the rifle to specific mission needs. It incorporates a dual rail, a long fore-end tube with modular rails, folding butt stock, and sling mounting points.
2. The standard angle of the dual rail is 20 MOA of inclination for the short and long action and 40 MOA for the 0.50 Cal. The dual rails are secured to the chassis tube (tube top rail) and the rifle's receiver (top rail).
3. The fore-end tube provides a mounting surface for the tube top rail and accessory rails. A rail for bipod mounting is located at the forward-most bottom of the tube. This positions the bipod far forward of the rifles center of mass, which allows the sniper better control of the rifle under recoil, for better shot follow through.
4. The butt stock is user adjustable without tools for length of pull, cheek piece height and recoil pad height.

5. The chassis system incorporates a folding butt stock to improve portability of the rifle and reduce visual signature of the sniper by lowering the sniper rifle's overall length. Butt stock folds to the right to cover and protect the bolt handle.
6. The chassis features a detachable chassis base whereby the magazine well and pistol grip assemblies are removed from the chassis center section to allow access to the trigger mechanism in order to perform trigger adjustments and maintenance.
7. The chassis uses standard magazines (single or double stack). Magazine catch is incorporated into the lower and is a lever type catch that engages the lug on the back (or front) of the magazine.
8. Flush cup sling mounts at the butt stock, butt stock hinge and forward of the magazine well permit the user to select the optimum sling location.

2.2. Chassis installation

WARNING! Before any assembly/disassembly of the firearm and chassis, remove the bolt from the action, remove the magazine and check the chamber of the rifle to make sure there are no cartridges in the rifle. NEVER attempt to make any disassembly on a loaded rifle.

Overview

The Dual/Lite Strike major components are preassembled. The installation process consists of the following:

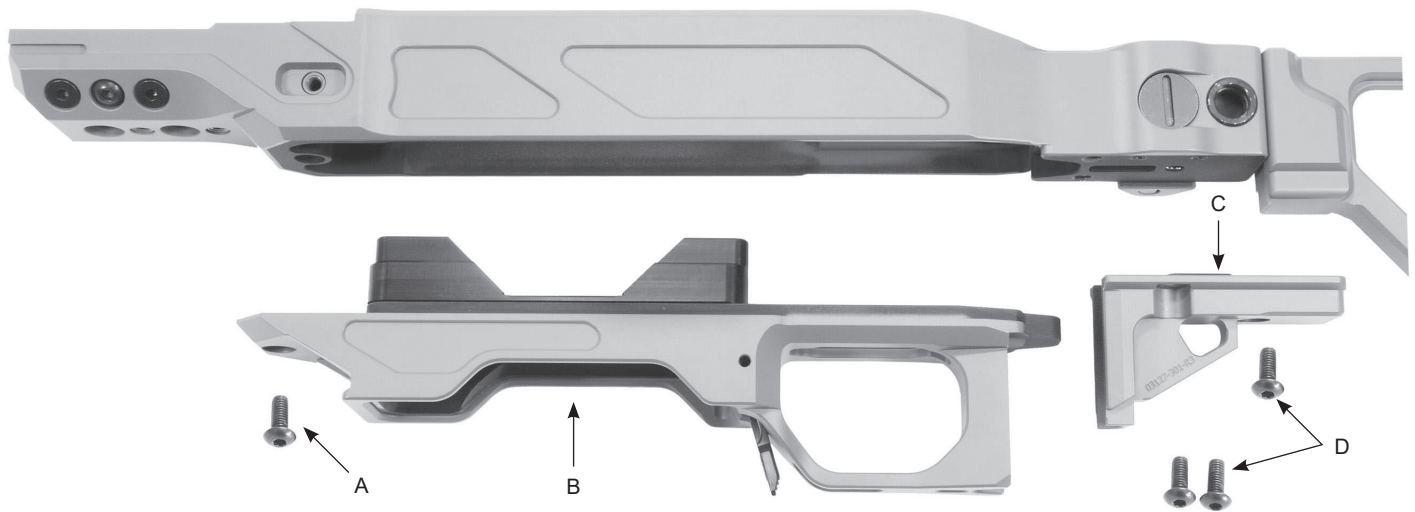
- A. Removing detachable base from the bottom of the chassis to install rifle action and magazine sleeve.
- B. Installing rifle barreled action to the chassis frame.
- C. Reinstalling detachable base and pistol grip to the chassis.
- D. Joining the front tube to the chassis.
- E. Install the receiver rail, which mates with the top of the fore-end tube to form a continuous mounting platform.

A. Removal of detachable base

The detachable base is a feature that allows access to the trigger group without having to remove the barreled action from the chassis.

1. Remove the three (3) cap screws (item D) from the pistol grip mounting plate (item C), and remove the assembly from the chassis.
2. Remove the cap screw (item A) located in front of the magazine well.

3. Pull the detachable base (item B) away from the bottom of the chassis.

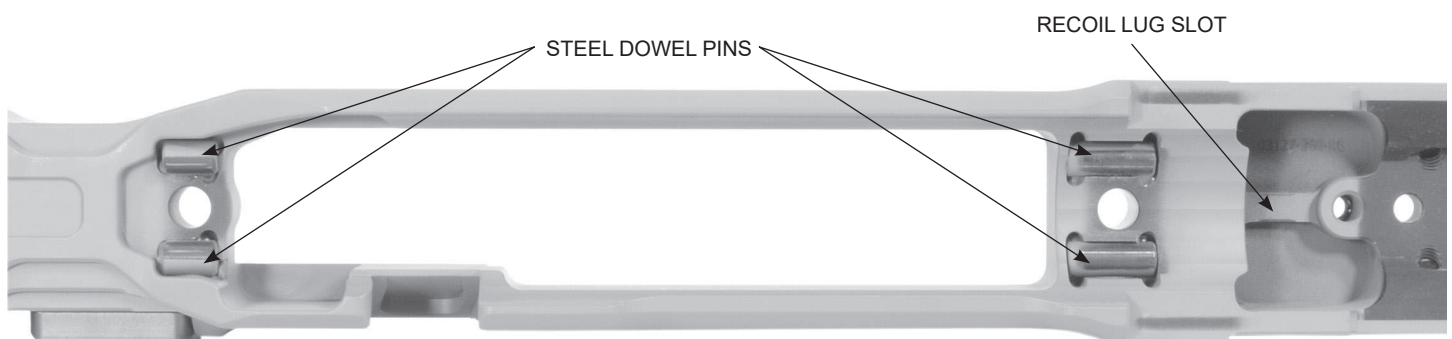


4. The magazine sleeve can be removed by pulling it out of the detachable base. At this step, verify that the magazine sleeve fit well with the magazine.

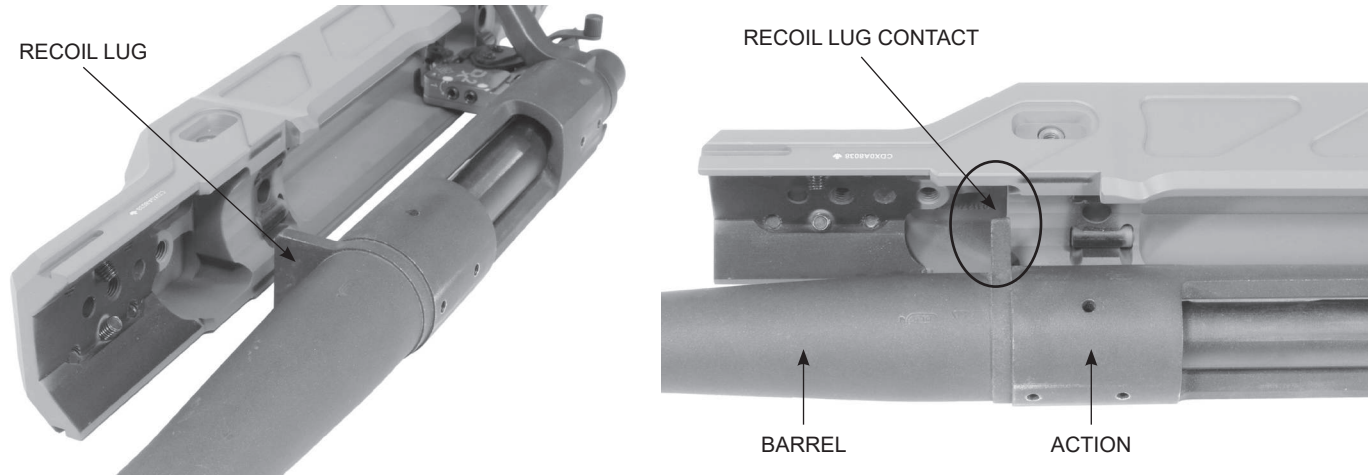
B. Installation of the action into the chassis

The barreled action is held to the chassis frame by conventional method using a front and rear action screw. The action rests on four (4) dowel pins that serve as front and rear V-blocks to support and center the action. Recoil is transferred via the rifle recoil lug to the rear surface of the lug mortise depicted below.

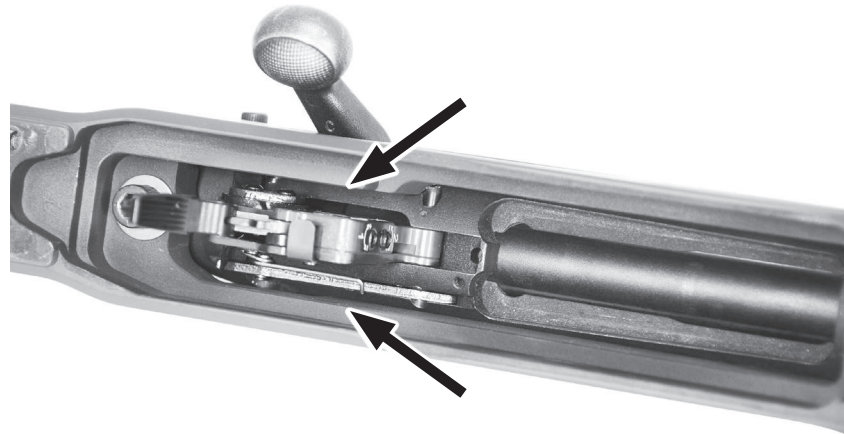
NOTE: Verify all four dowel pins are present, free of dirt, dent, or marks before installing the action into the chassis. Please refer to section 3.2. for the threadlocker application procedure prior to proceed to the chassis assembly.



1. Make sure the fore-end tube is not installed on the chassis.
2. Make sure that the detachable base is removed prior to install the action into the chassis.
3. Insert the barreled action into the chassis frame.
4. Verify that the receiver fully inserts into the chassis and the rear face of the recoil lug is bearing against the rear face of the recoil lug slot in the chassis.
5. Verify clearance on either side of the recoil lug and the front face. The single contact point for the recoil lug is the rear face against the back face of the recoil lug recess as depicted below.



6. Hold the barreled action in place and turn over to check the fit of the trigger mechanism; identify any clearance issues between the trigger, safety catch and the corresponding recess in the chassis, as shown below.



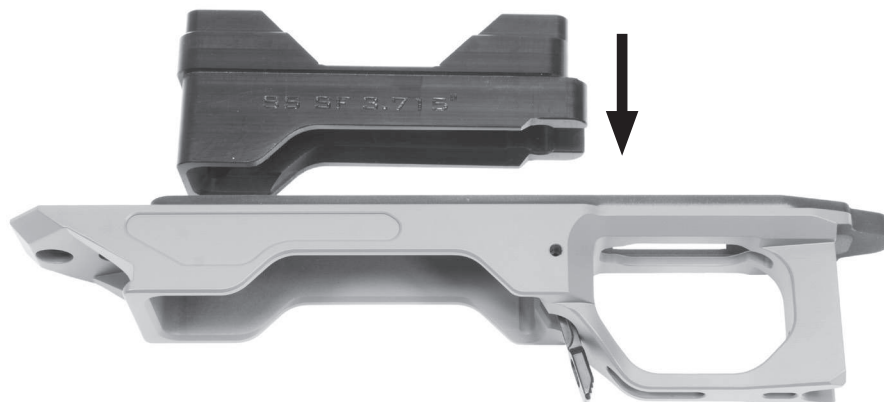
7. After confirming there are no clearance issues with the trigger or safety mechanisms, insert and start the front and rear action/receiver screws. Pay attention to install the Belleville washer in the correct orientation as shown below. Do not fully tighten at this time.



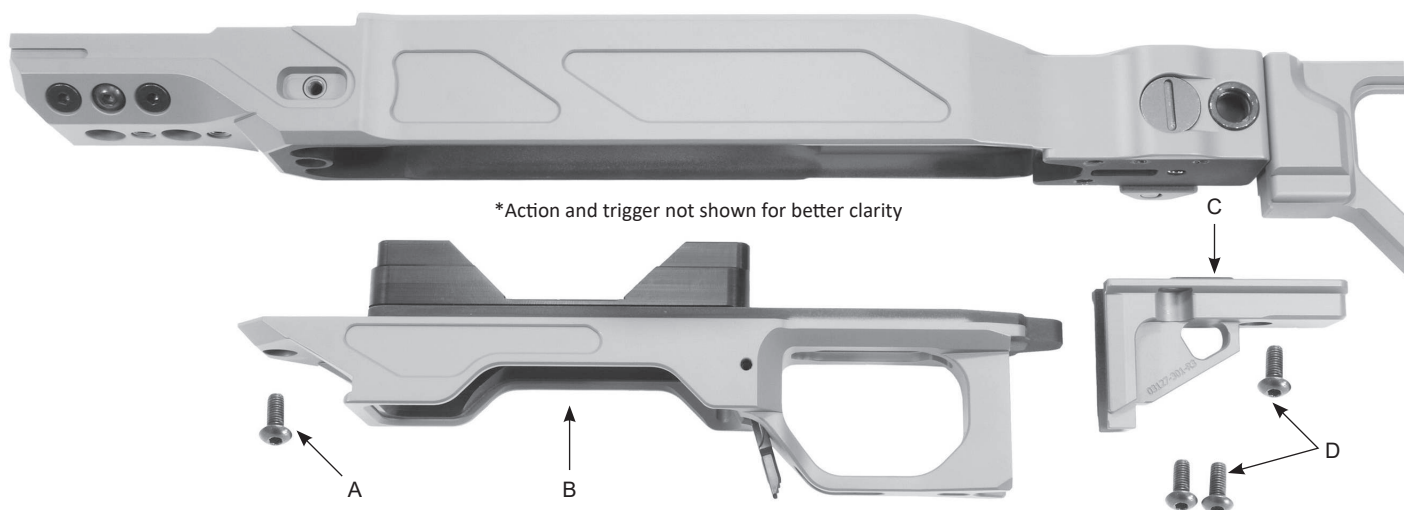
- Once both screws are in place, press the muzzle against a fixed object to ensure the recoil lug is firmly resting against the chassis lug recess contact point. While holding slight tension, tighten the two action screws. Alternate tightening between both front and rear screws to keep even tension. Continue this process until full torque is reached (refer to Appendix B for torque specification).

C. Installation of detachable base and magazine sleeve

- If equipped, fit the magazine sleeve into the detachable base.



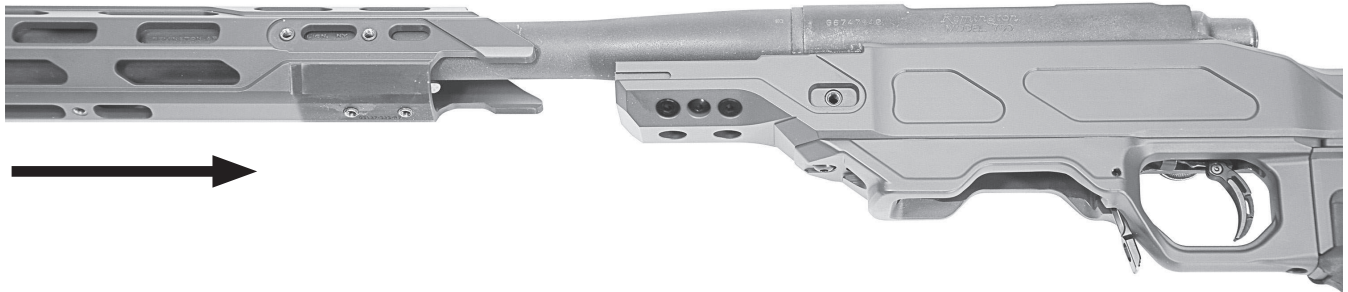
- Fit the detachable base (item B) onto the bottom flat of the chassis; the front of the base is located by a protrusion that engaged into a pocket.



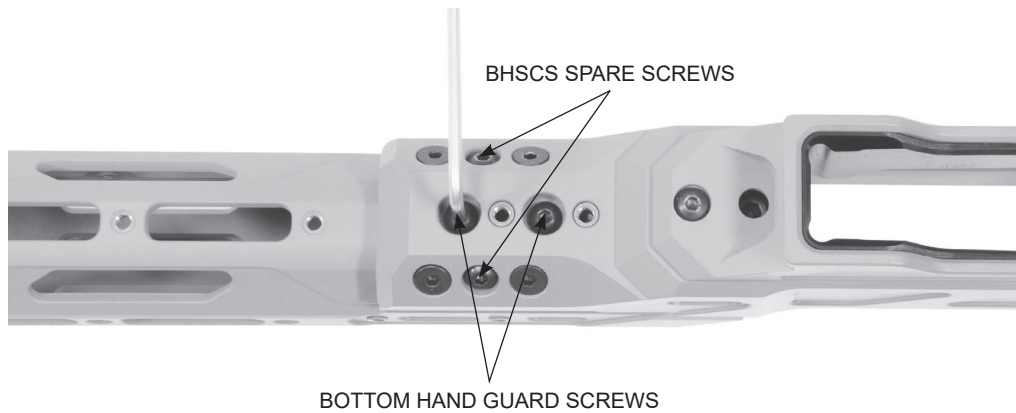
- Install the pistol grip mounting plate (item C) then install and tighten all four button head cap screws (items A and D). Torque screws to 25-30 inch pounds.
- Install pistol grip using provided screw (not depicted). Torque this screw to 35 inch pounds.
- Check clearance of magazine well with an empty magazine.
- With magazine inserted pull down on the magazine to confirm that the magazine catch functions and retains the magazine in position.
- Insert a dummy/inert cartridge into the magazine. Operate the bolt to confirm proper feeding.

D. Installation of fore-end tube

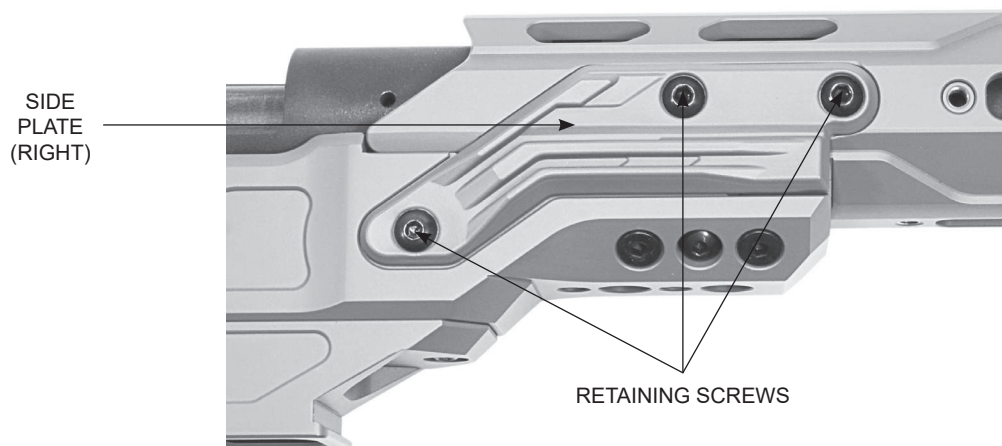
1. Slide the hand guard tube over the barrel and into the chassis.



2. Install the two bottom hand guard tube screws and the two BHSCS spare screws but do not fully tighten.



3. Install the two side plates (left and right) and start, but do not fully, tighten retaining screws.



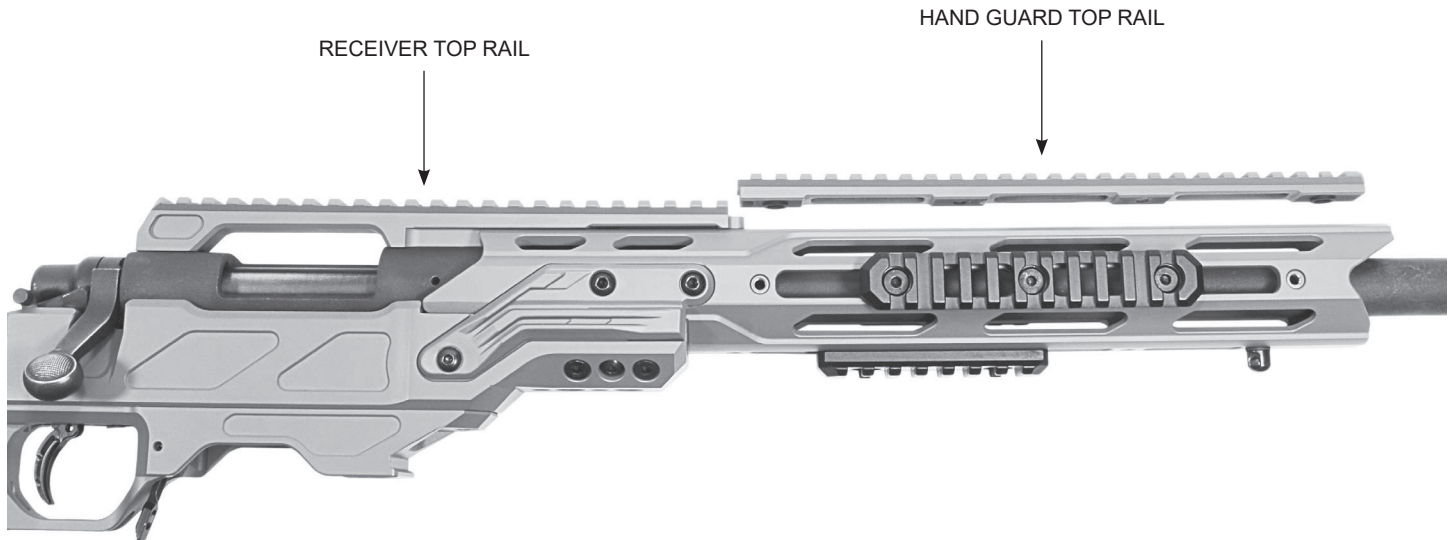
4. If equipped with a top rail, go to the next section (E). If not, torque all the screw to the torque specified in Appendix B.

This document contains information that is proprietary to Cadex Inc. Neither this document nor the information contained herein shall be used, duplicated or communicated by any means to any third party, in whole or in part, except with the prior written consent of Cadex Inc. This restrictive legend shall not be altered or obliterated from this document.

E. Installation of top rail (if equipped)

With the hand guard tube loosely installed (screws should not be tightened) the receiver top rail can now be fitted to the action.

1. Remove the top rail from the hand guard. Install the receiver top rail and ensure proper orientation. If a localization device is present on the top of the action (dowel pin, lug, etc), make sure the rail is correctly engage prior to continue assembly.
2. Apply pressure on the rail to ensure it is firmly down against the receiver.

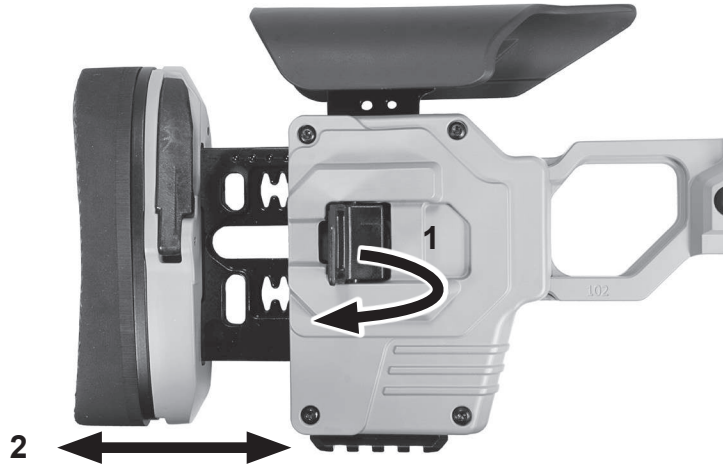


3. Insert and install (start) all top rail mounting screws.
4. Install the hand guard top rail and insert all the screws.
5. Incrementally tighten each screw to the required torque specification (varies due to screw diameter, see Appendix B).
6. After installation of the top receiver rail is complete, return to the hand guard tube base and fully tighten all fasteners in the following order:
 - A. Fully tighten the bottom two hand guard tube screws and the two BHSCS spare screws to 25-30 inch pounds each.
 - B. Fully tighten all six of the side plate screws to 20-25 inch pounds.

2.3. Operation of stock controls (Dual and Lite Strike)

A. Adjusting length of pull

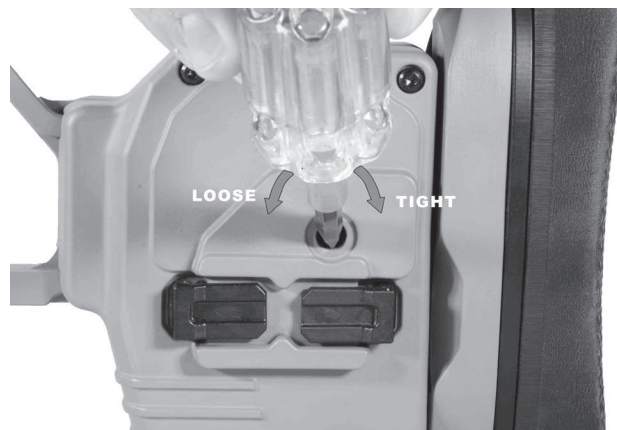
Length of pull (LOP) is adjusted by pulling the extension latch (1) and then by pulling or pushing recoil pad to desired position (2). The adjustment mechanism has clicks that can be felt as the mechanism is adjusted. Once the position is attained, press in on the extension latch to lock the stock.



B. Adjusting the length of pull locking mechanism

The length of pull (LOP) locking mechanism can be adjusted to obtain the desired tension into the latch. A screw is located inside the butt stock and is accessible by a hole located on the left side of the butt stock. Please note that the locking mechanism is factory adjusted and should not be modified unless the mechanism becomes loose.

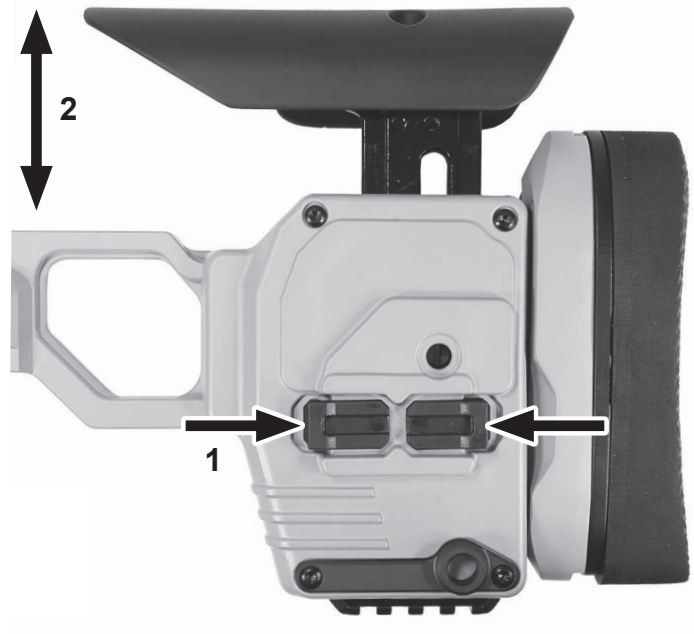
1. The extension latch lever should be in the close position prior to adjust the tension.
2. Insert a flat screw driver (3/16" wide is suggested) into the side hole. Turn the screw driver clockwise to bring more tension into the latch lever until the movement become more difficult. A torque of 10 in-lbs (1.1 N-m) is suggested and it should not be more than 13 in-lbs (1.4 N-m).



3. Verify that the latch lever work well by doing a length of pull adjustment (the procedure is described in section 2.3 - A).

C. Adjusting height of cheek piece

1. Cheek piece is adjustable to place shooters eye in the optimum position with the optic and to provide a comfortable cheek support.
2. Cheek piece height is adjusted by simultaneously pressing on the height adjustment catches (1) and raising/lowering the cheek piece to the desired height (2). Releasing the spring loaded catches locks the cheek piece in place.



D. Adjusting height of recoil pad

1. The pad is adjusted vertically by pivoting the top of the lever outwards (1) and moving the recoil pad to the desired height (2). Rotate the top of lever inwards to lock the recoil pad.



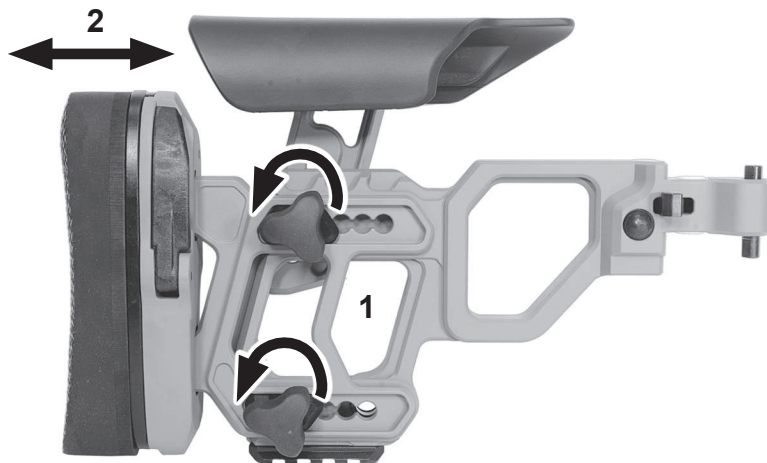
2.4. Operation of stock controls (Lite Competition)

A. Adjusting the length of pull

The length of pull (LOP) can be adjusted by removing the upper and lower knobs and the two locking sleeves (1).
Use caution when removing the top knob, this knob is also used to hold the cheek piece in place.

Once removed, the butt pad may be moved forward or backward (2).

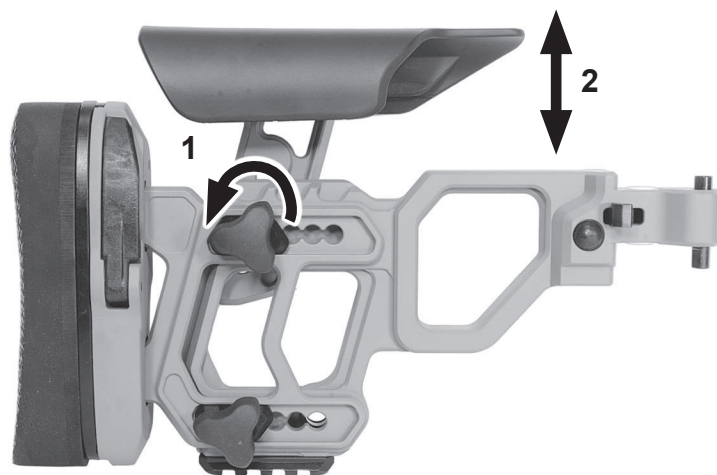
Once adjusted to the correct position, replace the locking pieces in their respective holes and replace the knobs.



B. Adjusting the height of cheek piece

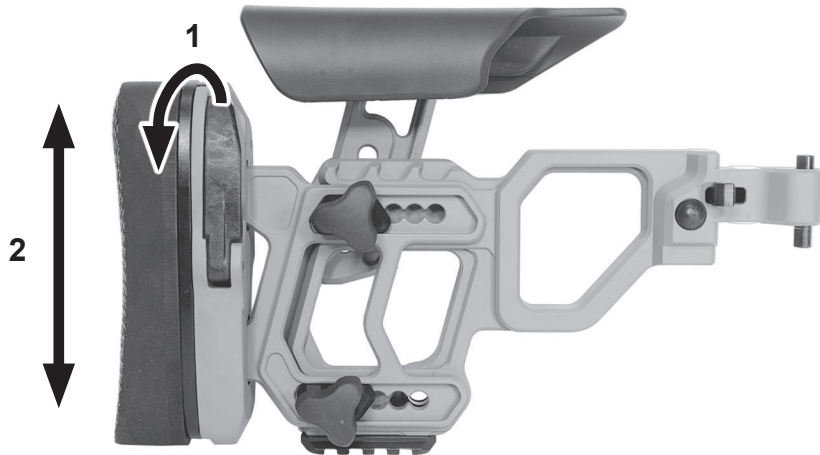
The cheek piece height adjustment is similar to the LOP adjustment but only the top knob and cheek piece locking nut need to be removed (1).

Once adjusted to the correct position (2), replace the locking nut and knob.



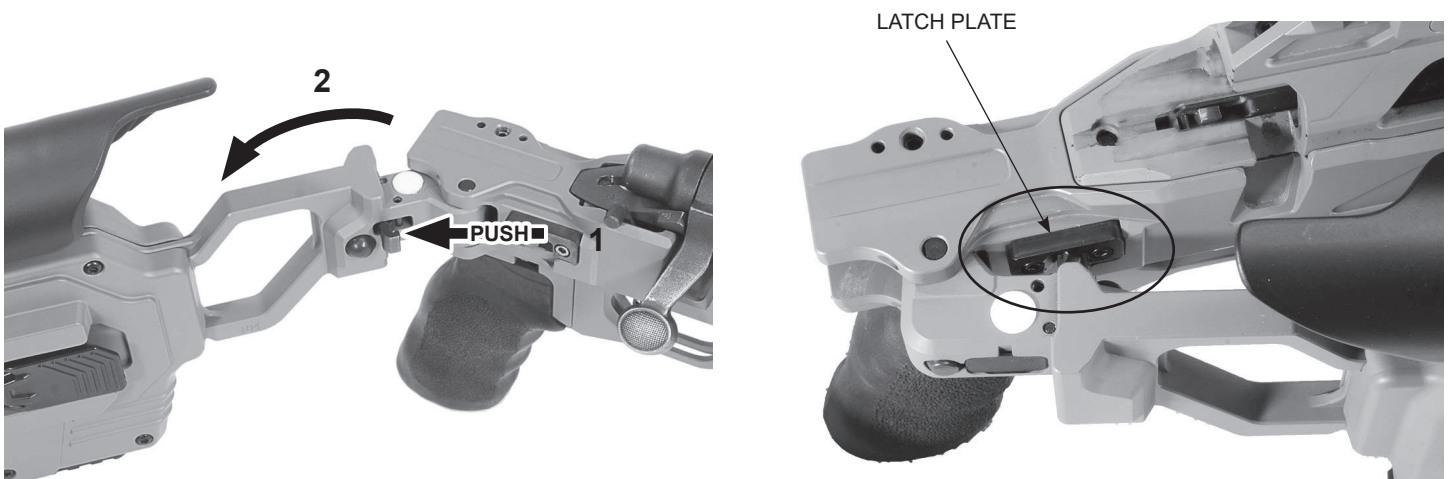
C. Adjusting height of recoil pad

1. The pad is adjusted vertically by pivoting the top of the lever outwards (1) and moving the recoil pad to the desired height (2). Rotate the top of lever inwards to lock the recoil pad.

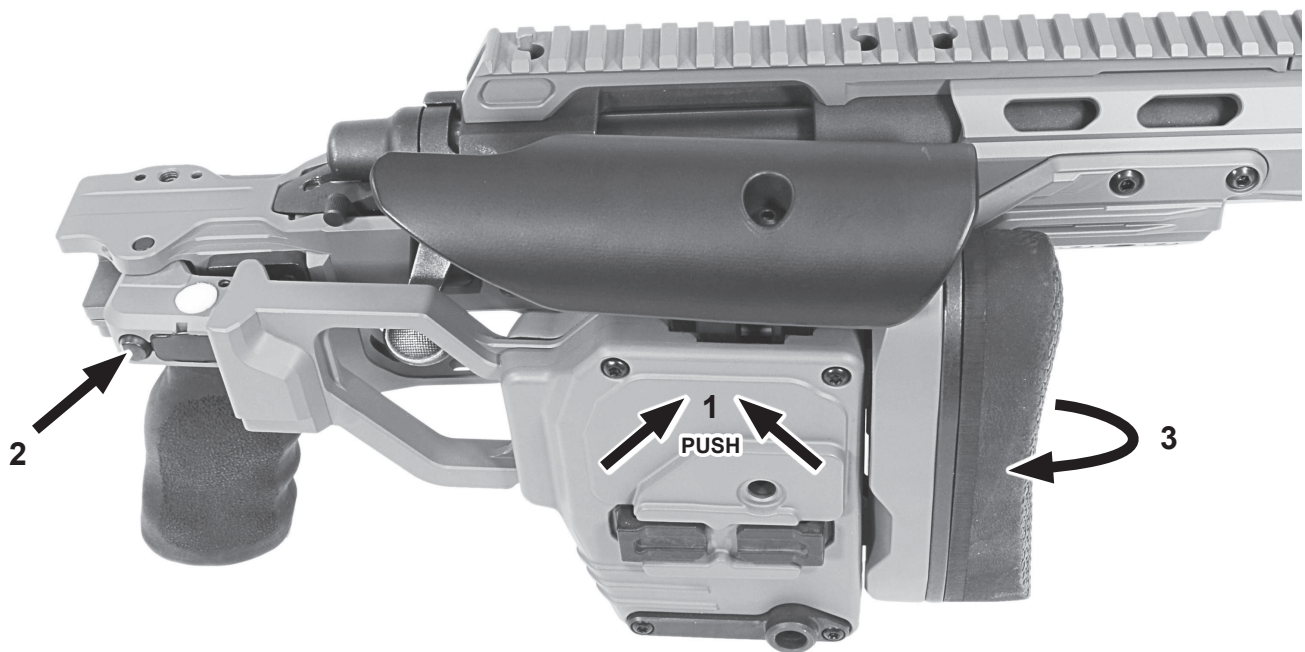


2.5. Folding, extending and tightening the butt stock

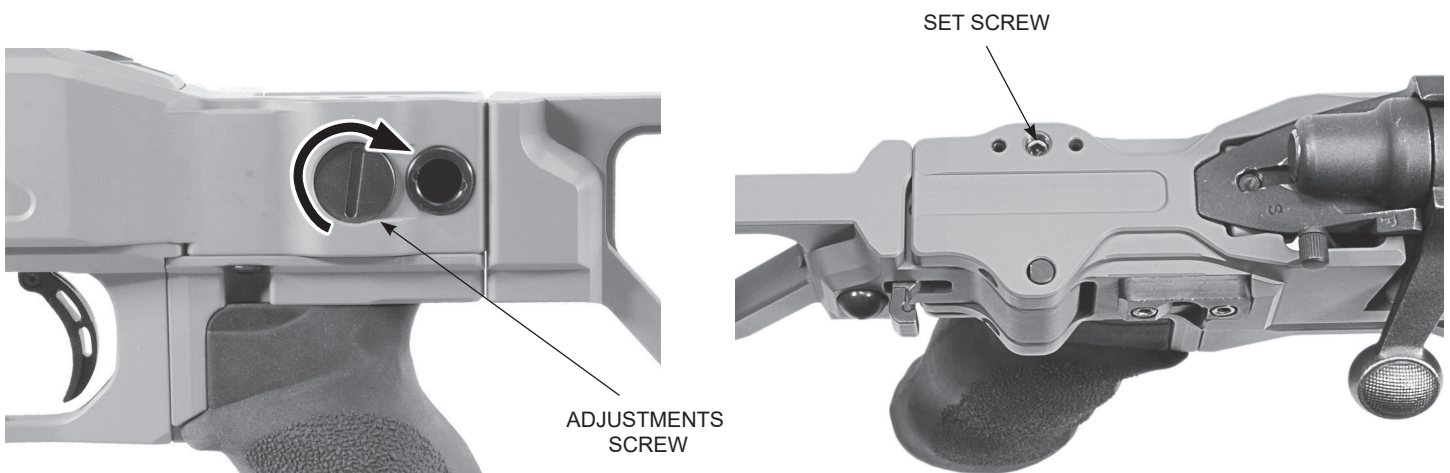
1. To fold the butt stock, pull back the locking tab to disengage the lock (1), and fold the stock (2). When the stock is in the folded position, the lock tab will engage the latch plate on the side of the chassis to secure the butt in the folded position.



2. To extend the butt stock, slightly push the butt stock (1) to the chassis and then press the lock stud (2) and rotate the butt stock (3) fully to the extended position. Push the butt stock firmly into position, then attempt to move the butt to the right to ensure the lock mechanism is fully engaged. Do not apply excessive force when folding or extending the stock.



3. The butt folding mechanism can be adjusted using the adjustment screw located on the left side of the hinge. If the butt locking mechanism gets loose, unscrew the set screw located on the top of the chassis right over the adjustment screw, then tighten the adjustment screw until it can't be turned anymore. Finally, tighten the set screw to lock the adjustment screw in place. Note that the butt stock has to be fully extended and locked in place to perform this adjustment.



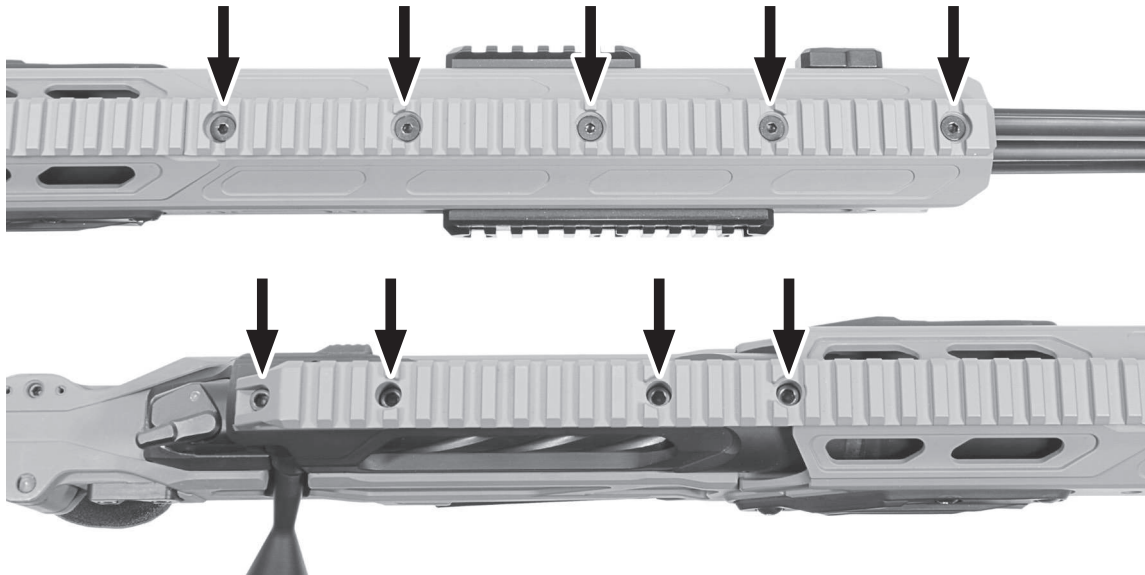
2.6. Chassis disassembly

WARNING! Before any disassembly of the firearm and chassis, remove the bolt from the action, remove the magazine and check the chamber of the rifle to make sure there are no cartridges in the rifle. NEVER attempt to make any disassembly on a loaded rifle.

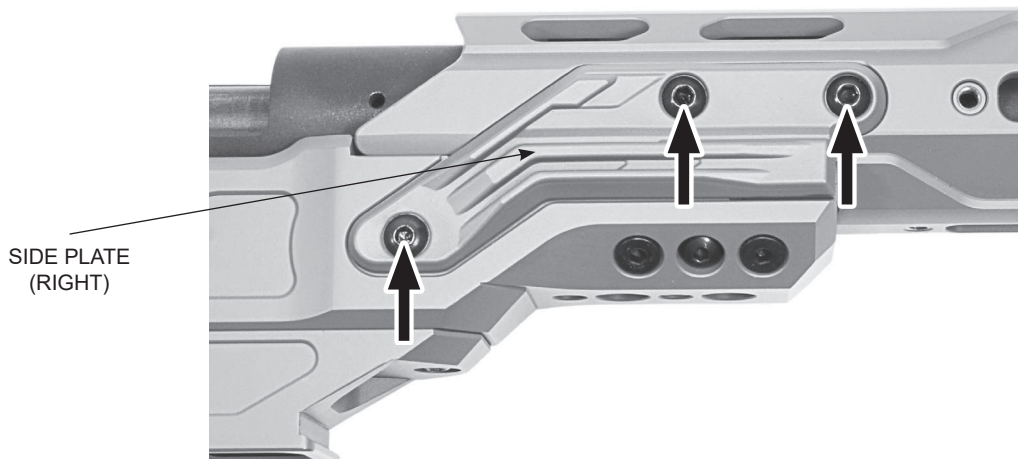
A. Top rail and fore-end tube disassembly

When chassis disassembly is required, perform the procedure that follows.

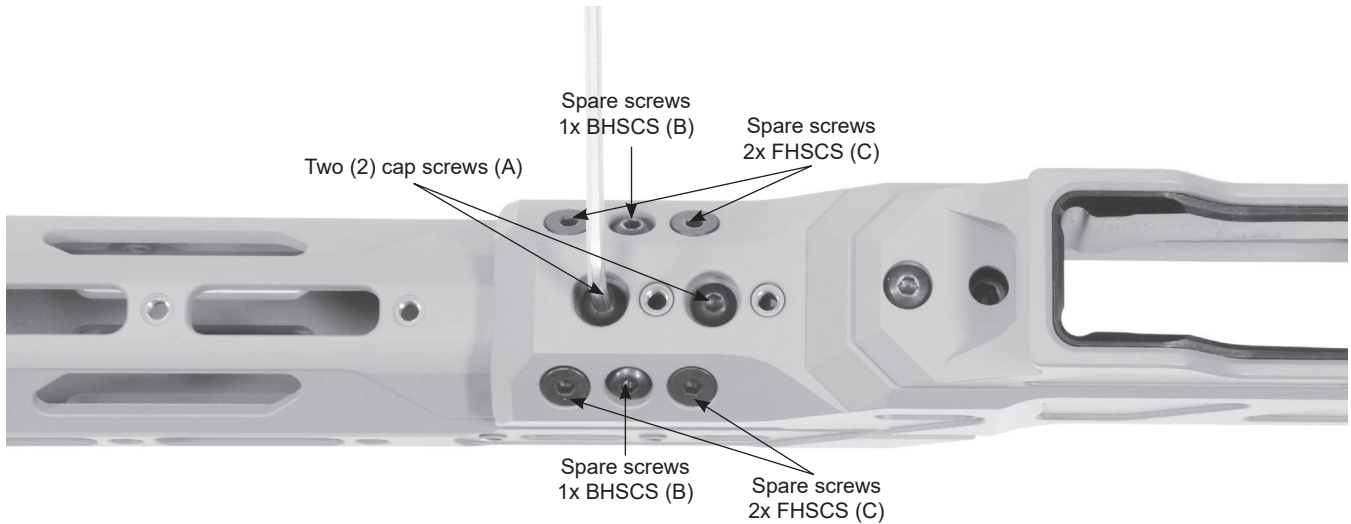
1. If removing optics from the top rail, note position of the rings on the picatinny rail and the zero settings of optics for future reference. If equipped with a muzzle brake, removed it prior to proceed with the fore-end tube disassembly.
2. Disassemble the entire top rail by removing cap screws.



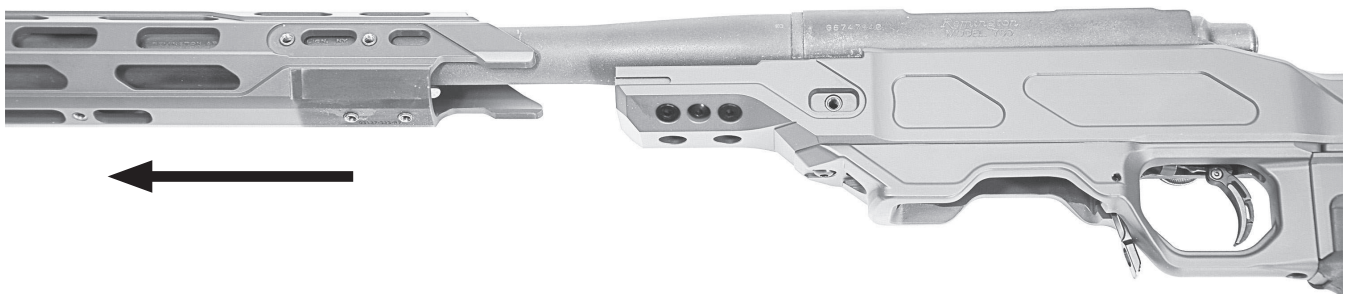
3. Remove the three (3) cap screws from each side plate (left and right), and remove the side plates from their recess. (If optional short side rails are installed, remove rails prior to removing side plates)



4. Remove two (2) cap screws (A) securing fore-end tube from the bottom of the chassis. The two (2) spare BHSCS (B) also need to be removed. Item (C) does not need to be removed.



5. Separate the fore-end tube from the chassis center section.



3. CLEANING AND MAINTENANCE

WARNING! Verify the chamber and magazine to make sure there are no cartridges in the firearm prior to any cleaning and maintenance on the firearm.

3.1. Chassis maintenance

1. When tightening fasteners do not over tighten. Where a torque is specified, employ an accurate in-lbs torque wrench. Use correct fitting tools to loosen or tighten fasteners.
2. When operating the controls of the stock, do not use excessive force.
3. To clean the chassis, use a soft brush to remove accumulated sand, mud and debris. Wipe down surfaces using soft rags. Do not use harsh chemicals or any abrasive materials to clean the chassis.
4. Small amounts of a light lubricant can be applied to the stock hinge and locking mechanism.

3.2. Threadlocker application procedure

Your firearm came with a threadlocker liquid that need to be applied on screws prior assembly and torque. The threadlocker will prevent screws loosening from vibration and shock and provide screws lubricity during torque procedure.

- A. Before applying threadlocker, verify that both thread on screws and hole are free from rust, dirt or debris, oil, and grease.
- B. For through holes, apply threadlocker directly on screws (fig 1)
- C. For blind holes, apply threadlocker on thread hole (fig 2)

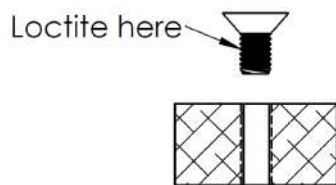


Fig.1 Through Hole

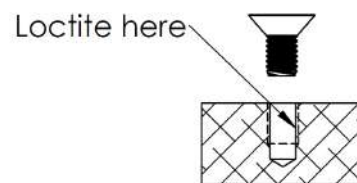


Fig.2 Blind Hole

- D. Once threadlocker is applied, finger tight all screws and then torque them to the appropriate torque.
- E. We recommend to let the threadlocker cure for a 24h period before using your firearm.

4. TECHNICAL AND WARRANTY SUPPORT

For technical and warranty support, the point of contact is Cadex Defence:

Cadex Defence

755 avenue Montrichard, Saint-Jean-sur-Richelieu
Quebec, Canada J2X 5K8 • Tel: 450-348-6774 • www.cadexdefence.com

For more details, please refer to the next page.



Limited Lifetime Warranty

At Cadex Defence we take a great sense of pride in the products that we design and produce as well as our customer service. If you are experiencing any problems, we appreciate your honesty with the situation and we will do what is right to help you as we really care for our customers.

We warrant products manufactured by Cadex Inc. to be free of defects in material or workmanship/manufacturing for **one year** following the initial owner's purchase. Cadex Defence reserves the right to cover under warranty, at its own discretion, its products for the **lifetime** of the product if we feel that it didn't meet our high standards of performance. Cadex reserves the right to use its discretion to warranty its products in special scenarios that have or may present themselves that are not noted in this document.

Cosmetic wear and normal wear items including but not limited to the barrel, extractors, ejectors, and springs are not covered by the warranty and it is the responsibility of the owner to assure the weapon is properly maintained.

Your Cadex Defence product was manufactured to perform properly with the original parts as designed. Altering or modifying parts is dangerous and will void the warranty. It is your responsibility to make sure any parts you install are made for this firearm, installed correctly, and that neither the originals nor the replacement parts are altered or changed. Firearms are complex precision tools with many parts that must operate correctly with other parts in order to maintain proper and safe operation. Putting your firearm together improperly or with incorrect or modified parts can result in a damaged firearm, serious personal injury, or death to you and/or others through malfunction. Always have a qualified armorer or gunsmith work on your Cadex Defence system or other firearms.

Please have the following information ready. You can contact us via email or toll free at the contact information listed below.

- Product Model
- Serial Number
- Date of Purchase
- Point of Purchase

CADEX INC.

755 Avenue Montrichard, St-Jean-sur-Richelieu, Quebec, Canada, J2X 5K8

customerservice@cadexinc.com

Office: 450-348-6774 (CANADA) • 802-466-4003 (USA)

Toll free: 1-888-348-6774

A message from the owner

For Cadex, customer satisfaction is very important.

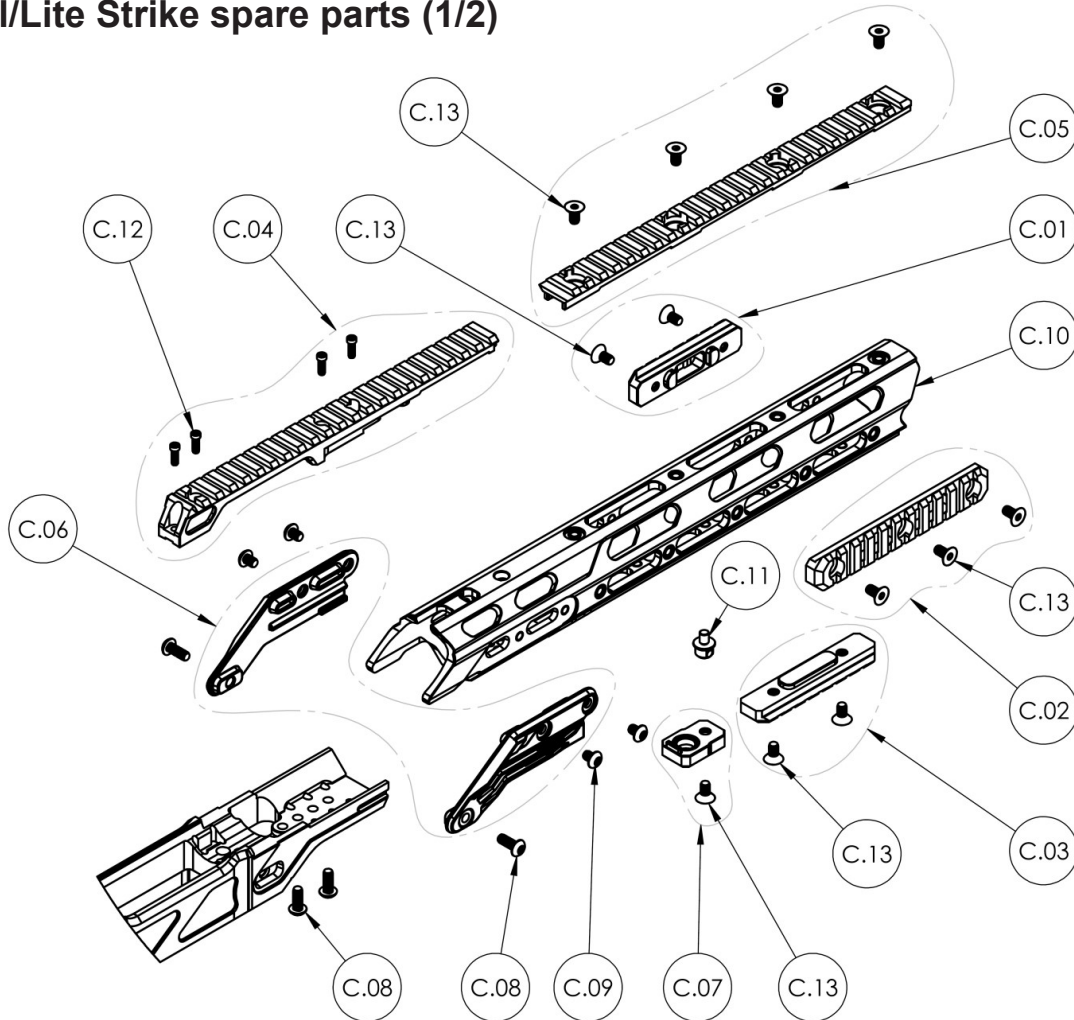
If you experience a problem with one of our dealers or distributors don't wait for the situation to get worse before bringing it to our attention. We firmly believe that with good communication and a little goodwill from both sides we will be able to find a solution to your problem.

Please contact us as soon as possible if you ever encounter any issues with one of our products.

- Serge Dextraze, Cadex CEO

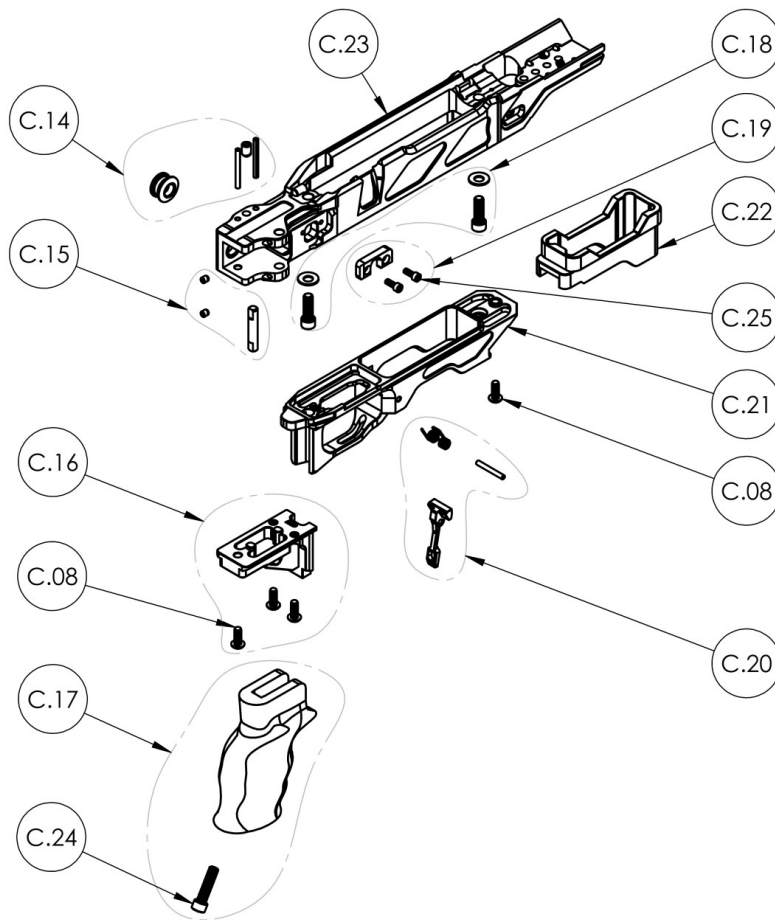
5. APPENDIX A - SPARE PARTS

5.1. Dual/Lite Strike spare parts (1/2)



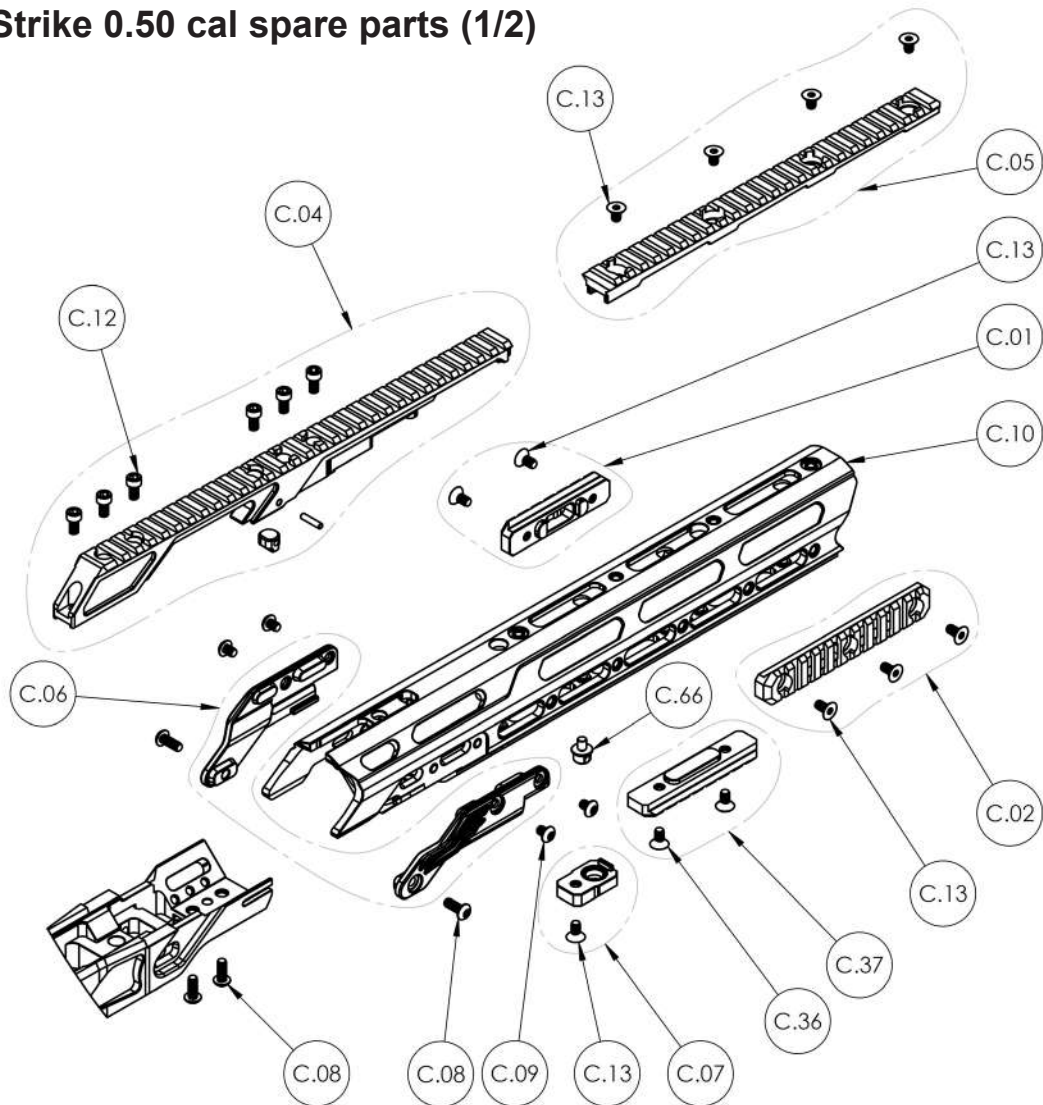
ITEM	DESCRIPTION	QTY
C.01	3" SHORT MODULAR RAIL KIT	1
C.02	5" SHORT MODULAR RAIL KIT	1
C.03	ALUMINUM BIPOD RAIL KIT	1
C.04	TOP RAIL KIT	1
C.05	FORE-END TOP RAIL KIT	1
C.06	SIDE PLATE KIT	1
C.07	SLING MOUNT KIT	1
C.08	BHSCS 10-32 X 1/2", SS	4
C.09	BHSCS 10-32 X 1/4", SS	4
C.10	FORE-END TUBE ASSEMBLY	1
C.11	BIPOD STUD (WASHER INCLUDED)	1
C.12	TOP RAIL SCREWS	4
C.13	FHSCS 10-32 X 3/8"	12

5.1. Dual/Lite Strike spare parts (2/2)



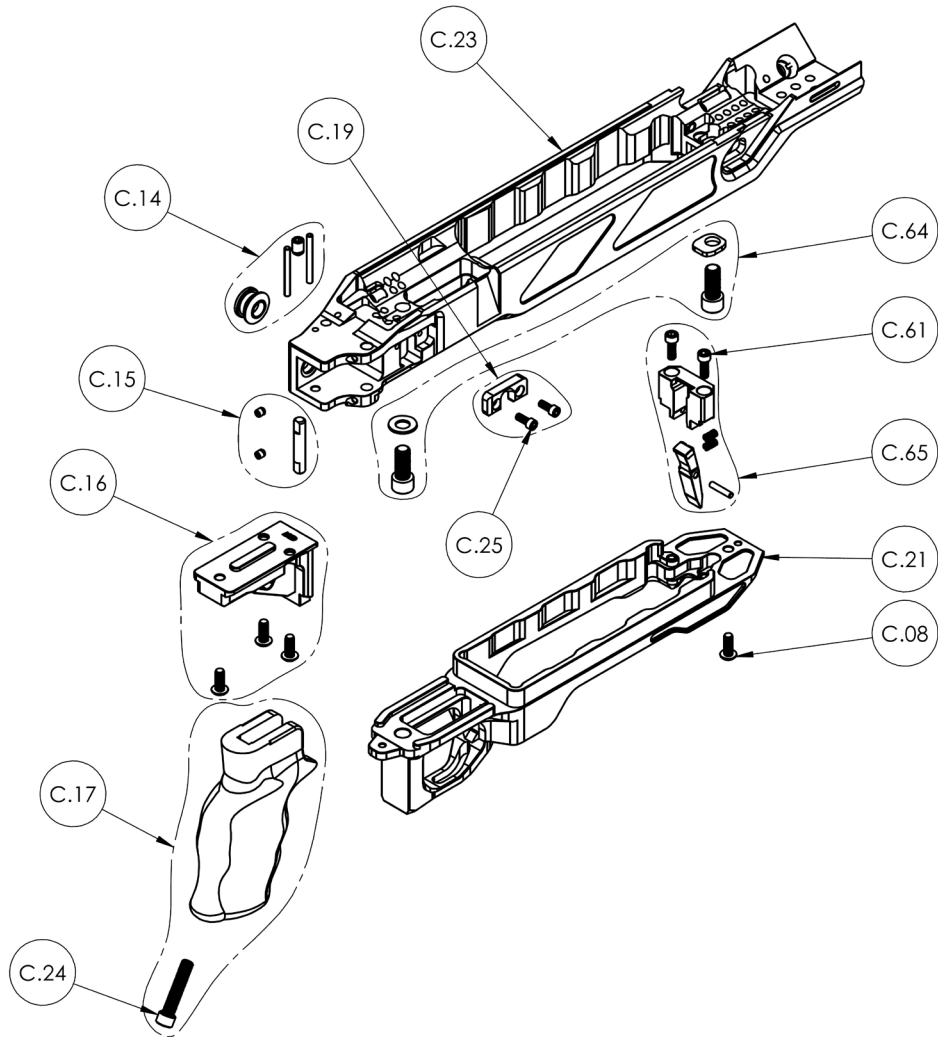
ITEM	DESCRIPTION	QTY
C.08	BHSCS 10-32 X 1/2", SS	4
C.14	ADJUSTABLE LOCKING MECHANISM KIT	1
C.15	HINGE PIN KIT	1
C.16	GRIP HOLDER KIT	1
C.17	TACTICAL PISTOL GRIP KIT	1
C.18	ACTION SCREW KIT (2 SCREWS AND 2 WASHER)	1
C.19	SIDE LOCKING CATCH KIT	1
C.20	MAGAZINE CATCH KIT	1
C.21	DETACHABLE BASE (WITH MAGAZINE CATCH)	1
C.22	MAGAZINE SLEEVE	1
C.23	LOWER RECEIVER	1
C.24	SHCS 1/4-28 X 1"	1
C.25	SHCS 6-40 X 3/8", SS	2

5.2. Dual Strike 0.50 cal spare parts (1/2)



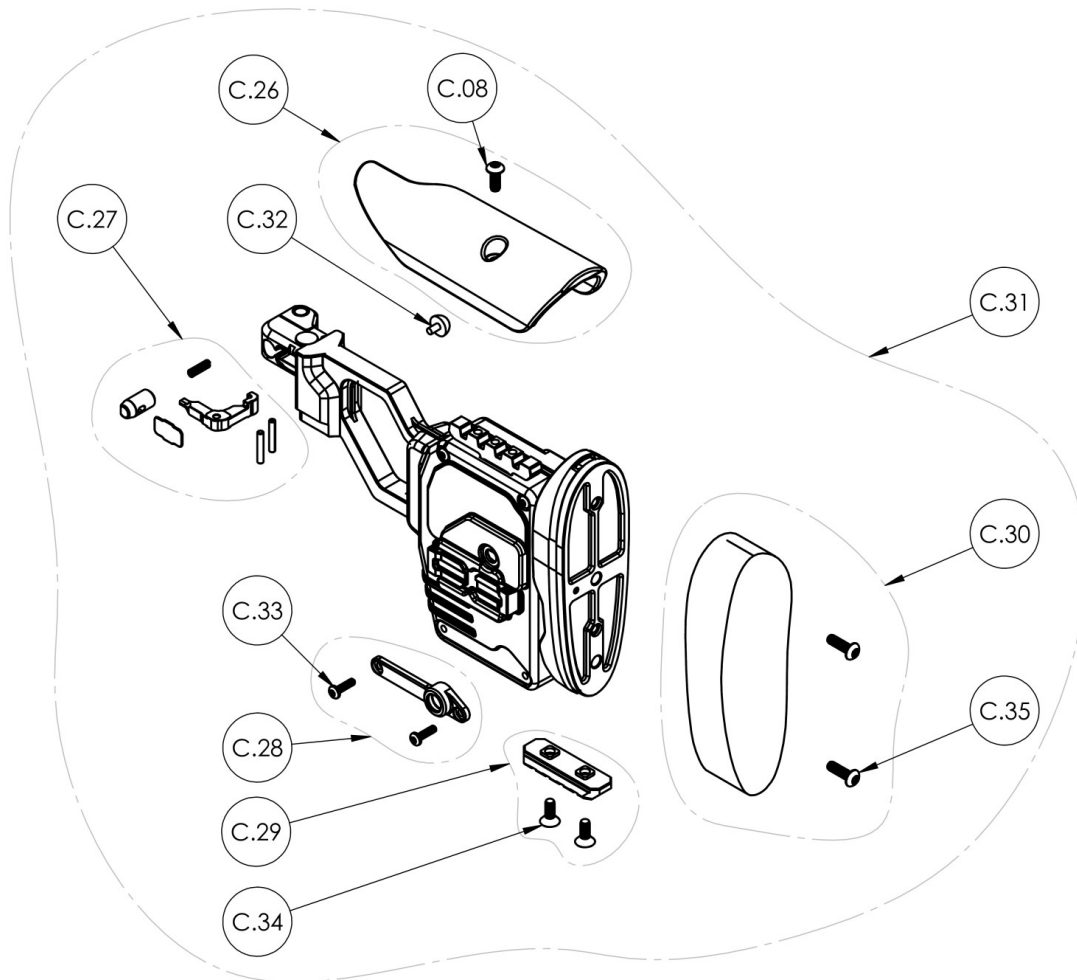
ITEM	DESCRIPTION	QTY
C.01	3" SHORT MODULAR RAIL KIT	1
C.02	5" SHORT MODULAR RAIL KIT	1
C.04	TOP RAIL KIT	1
C.05	FORE-END TOP RAIL KIT	1
C.06	SIDE PLATE KIT	1
C.07	SLING MOUNT KIT	1
C.08	BHSCS 10-32 X 1/2", SS	4
C.09	BHSCS 10-32 X 1/4", SS	4
C.10	FORE-END TUBE ASSEMBLY	1
C.12	TOP RAIL SCREWS	6
C.13	FHSCS 10-32 X 3/8"	10
C.36	FHSCS 1/4-28 X 7/16", SS	2
C.37	STEEL BIPOD RAIL KIT	1
C.66	BIPOD STUD (1/4-28)	1

5.2. Dual Strike 0.50 cal spare parts (2/2)



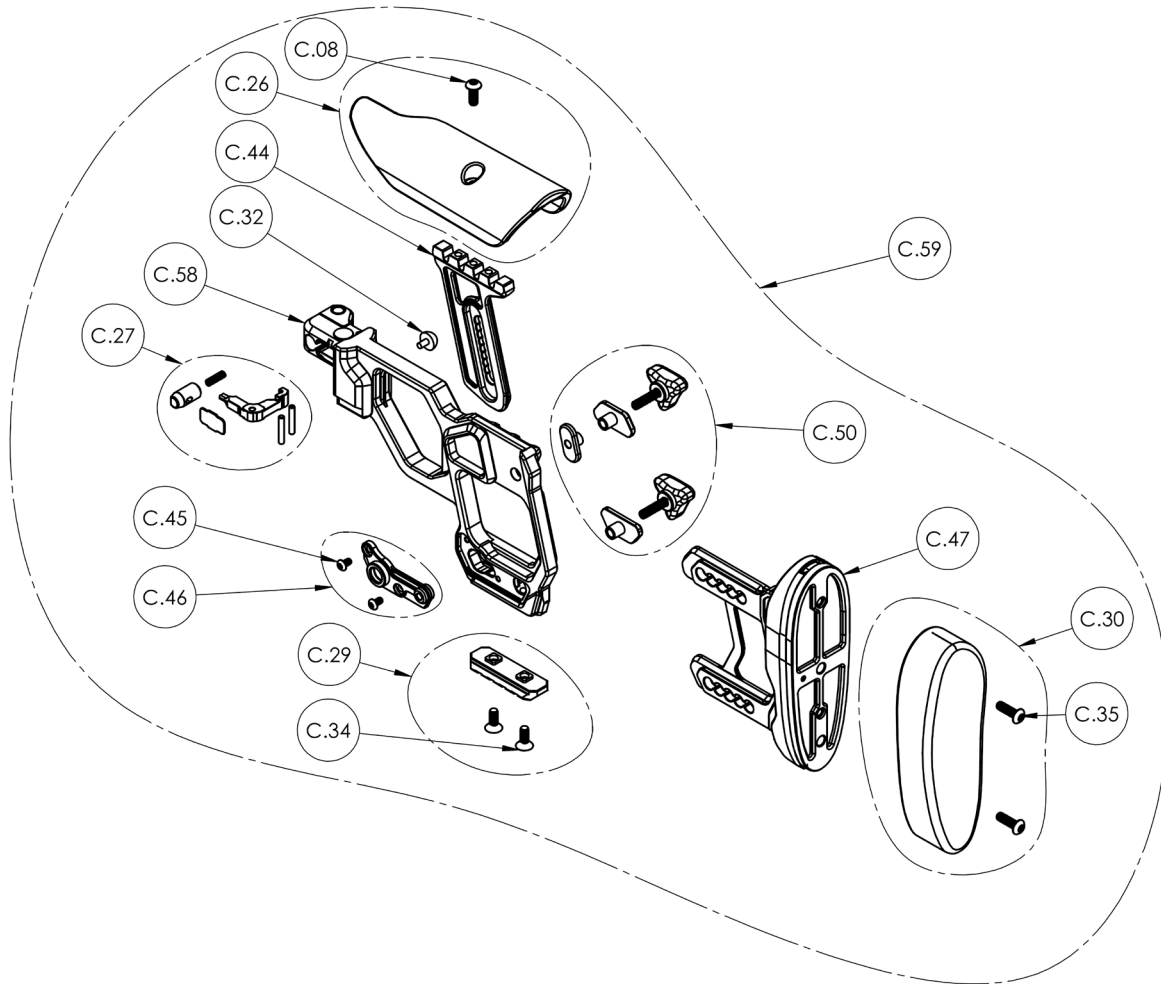
ITEM	DESCRIPTION	QTY
C.08	BHSCS 10-32 X 1/2", SS	1
C.14	ADJUSTABLE LOCKING MECHANISM KIT	1
C.15	HINGE PIN KIT	1
C.16	GRIP HOLDER KIT	1
C.17	TACTICAL PISTOL GRIP KIT	1
C.19	SIDE LOCKING CATCH KIT	1
C.21	DETACHABLE BASE	1
C.23	LOWER RECEIVER	1
C.24	SHCS 1/4-28 X 1"	1
C.25	SHCS 6-40 X 3/8", SS	2
C.61	SHCS 8-32 X 1/2", SS	2
C.64	ACTION SCREW KIT (2 SCREWS AND 2 WASHER)	1
C.65	MAGAZINE CATCH KIT	1

5.3. Butt Stock spare parts



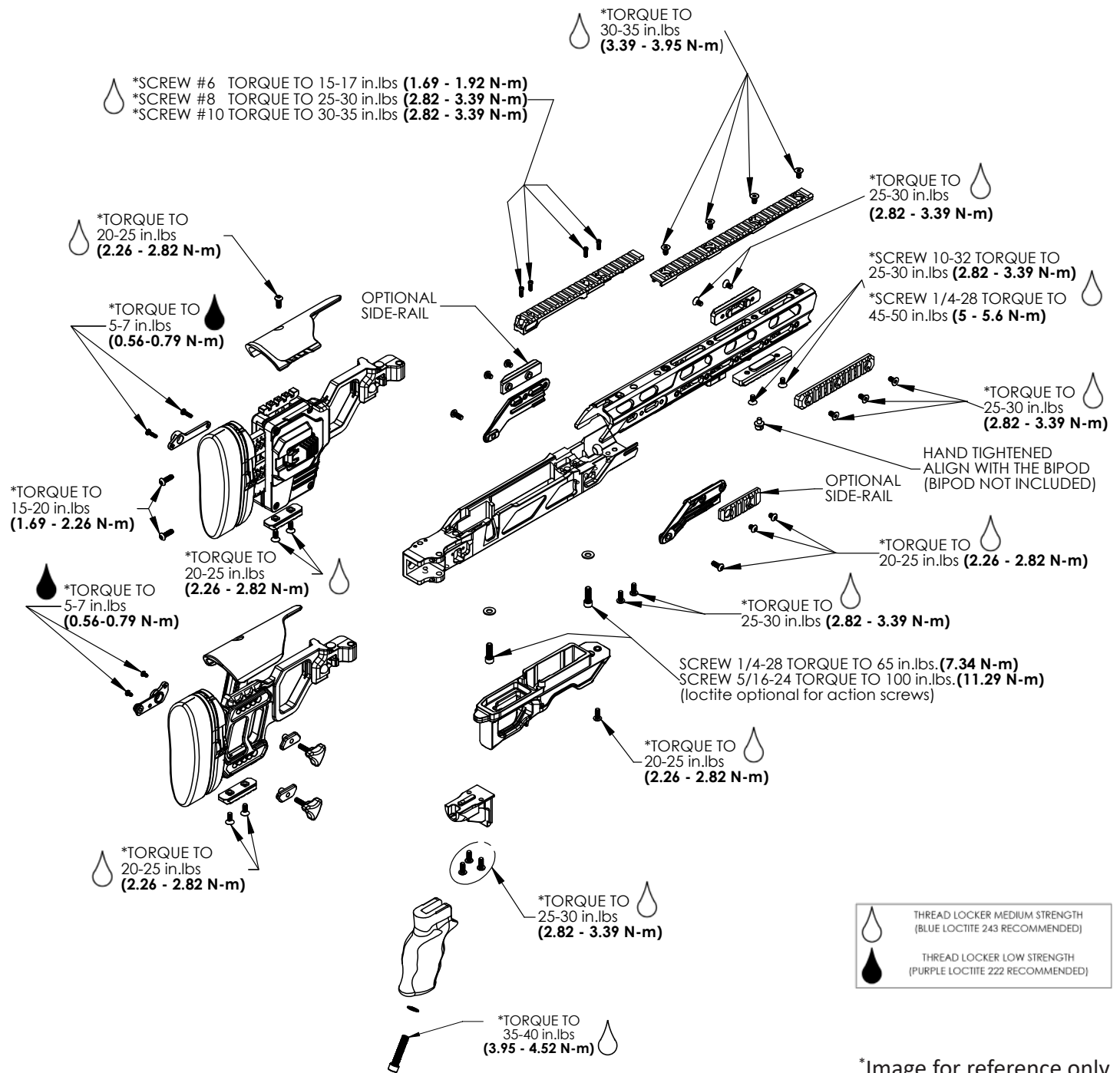
ITEM	DESCRIPTION	QTY
C.08	BHSCS 10-32 X 1/2", SS	1
C.26	CHEEK PIECE KIT	1
C.27	FOLDING LOCKING MECHANISM KIT	1
C.28	BUTT STOCK SLING ADAPTER	1
C.29	BUTT STOCK RAIL	1
C.30	BUTT PAD KIT	1
C.31	COMPLETE BUTT STOCK ASSEMBLY	1
C.32	RUBBER BUMPER	1
C.33	TORX BHCS 6-32 X 1/2", SS	2
C.34	FHSCS 10-32 X 1/2", SS	2
C.35	BHSCS 10-32 X 5/8", SS	2

5.4. Skeleton Butt Stock spare parts



ITEM	DESCRIPTION	QTY
C.08	BHSCS 10-32 X 1/2", SS	1
C.26	CHEEK PIECE KIT	1
C.29	BUTT STOCK RAIL	1
C.30	BUTT PAD KIT	1
C.34	FHSCS 10-32 X 1/2", SS	2
C.35	BHSCS 10-32 X 5/8", SS	2
C.44	CHEEK PIECE RAIL	1
C.45	BHSCS 6-32 X 1/4"	2
C.46	FLUSH CUP SLING ADAPTER KIT	1
C.47	LOP ADJUSTMENT BRACKET	1
C.50	ADJUSTMENT KNOB KIT	1
C.58	SKELETON BUTT MAIN FRAME (FOLDING)	1
C.59	SKELETON BUTT COMPLETE ASSEMBLY (FOLDING)	1

6. APPENDIX B - RECOMMENDED TORQUE SETTING



*Image for reference only

WARNING!

Regardless of shipping method, Cadex highly recommends checking each preset screws torque preventively.

If your order shipped by plane, and as such, withstood high amounts of vibrations, you MUST verify each preset screws for the right torque before using the weapon by referring to the figure above.

This document contains information that is proprietary to Cadex Inc. Neither this document nor the information contained herein shall be used, duplicated or communicated by any means to any third party, in whole or in part, except with the prior written consent of Cadex Inc. This restrictive legend shall not be altered or obliterated from this document.





CADEX INC.

HEAD OFFICE

755 ave. Montrichard,
Saint-Jean-sur-Richelieu, QC
Canada, J2X 5K8

Tel: 450-348-6774

Toll free: 1-888-348-6774

Fax: 450-348-7157



WWW.CADDEXDEFENCE.COM