

CHASSIS SYSTEM  
**USER MANUAL**

---

# **STRIKE SERIES**

STRIKE NUKE EVO

---





## Important usage information for:

Rev. 2.8 - 20220117

CADEX STRIKE NUKE EVO

If you have any remark about your new Cadex chassis, please contact us:

Cadex Inc.  
755 avenue Montrichard, Saint-Jean-sur-Richelieu  
Quebec, Canada J2X 5K8  
Phone: 450-348-6774  
www.cadexdefence.com

Please use the following spaces to record information about your new firearm.

Model: \_\_\_\_\_

Serial number: \_\_\_\_\_

Bought from: \_\_\_\_\_

Purchase date: \_\_\_\_\_

## Thank you for choosing a Cadex Strike Nuke Evo

Congratulations on your choice of a Cadex Strike Nuke Evo. The Cadex chassis are one of the most accurate, sophisticated and finest constructed bolt-action rifles chassis available today. The Cadex chassis represents a new generation of chassis, designed with improved features for superior performance. With proper care, your Cadex Chassis should give you many years of dependable, enjoyable service.

### YOU ARE RESPONSIBLE FOR FIREARM SAFETY

Failure to heed any of the following warnings could result in serious injury or death. As a gun owner, you accept a set of demanding responsibilities. How seriously you take these responsibilities can be the difference between life and death. There is no excuse for careless or abusive handling of any firearm. At all times handle this firearm, and all other firearms, with intense respect for their power and potential danger. Please read and understand all of the cautions, warnings, notices, proper handling procedures and instructions outlined in this user manual before using your new chassis.

**WARNING! Any modifications and/or disassembly of chassis other than those described in this manual could void the warranty.**

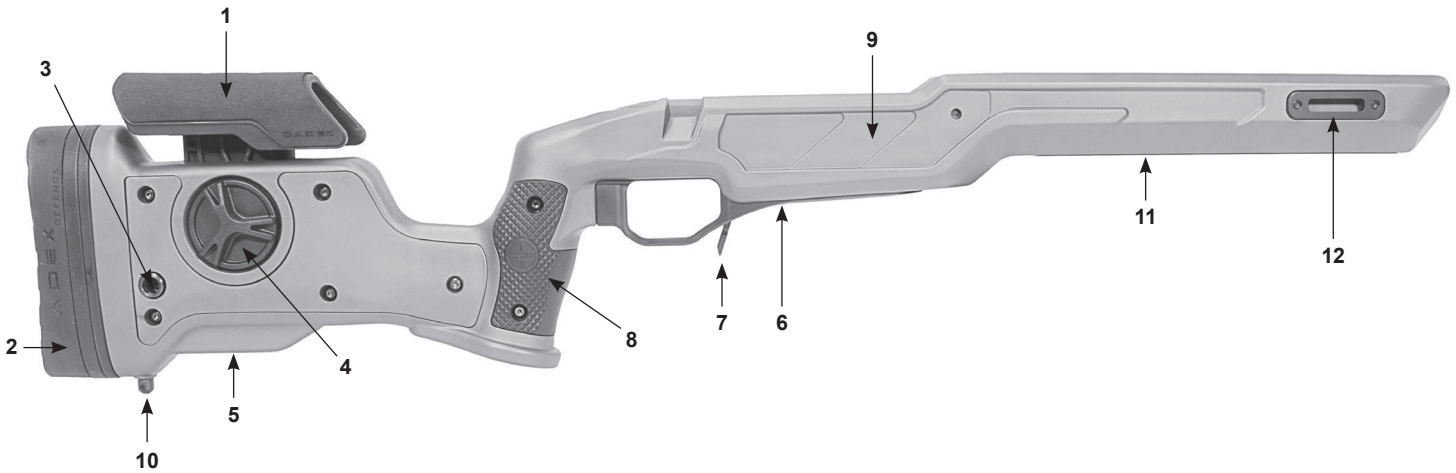
This document contains information that is proprietary to Cadex Inc. Neither this document nor the information contained herein shall be used, duplicated or communicated by any means to any third party, in whole or in part, except with the prior written consent of Cadex Inc. This restrictive legend shall not be altered or obliterated from this document.

# Contents

<b>1.</b>	<b>CADEX CHASSIS FEATURES</b> .....	<b>5</b>
1.1.	STRIKE NUKE EVO .....	5
<b>2.</b>	<b>CADEX STRIKE NUKE EVO SPECIFICATION</b> .....	<b>6</b>
2.1.	Chassis description .....	6
2.2.	Chassis installation .....	6
	Overview .....	6
A.	Installation of the rifle barreled action into the chassis frame .....	6
B.	Installation of accessories to the chassis .....	8
2.3.	Operation and stock controls .....	9
A.	Adjusting the length of pull .....	9
B.	Adjusting the height of the recoil pad .....	11
C.	Adjusting the height of the cheek piece .....	12
D.	Adjusting the lateral position of the cheek piece .....	12
<b>3.</b>	<b>CLEANING AND MAINTENANCE</b> .....	<b>14</b>
3.1.	Chassis maintenance .....	14
3.2.	Threadlocker application procedure .....	14
<b>4.</b>	<b>TECHNICAL AND WARRANTY SUPPORT</b> .....	<b>14</b>
<b>5.</b>	<b>APPENDIX A - SPARE PARTS</b> .....	<b>16</b>
5.1.	Chassis spare parts .....	16
<b>6.</b>	<b>APPENDIX B - RECOMMENDED TORQUE SETTING</b> .....	<b>18</b>

# 1. CADEX CHASSIS FEATURES

## 1.1. STRIKE NUKE EVO



KEY	PART	FUNCTION
1	Cheek piece	Provides a cheek rest that adjusts for elevation required to align operator's aiming eye with various optical sighting systems.
2	Recoil pad	Provides a means to reduce the recoil energy transferred to shoulder.
3	Flush cup sling mount	Provide attachments points for push button sling mount.
4	Cheek piece adj. knob	Allows adjustment of the cheek piece height.
5	Buttstock accessories adaptor	Provides a means to attach various types of mono-pods or accessories.
6	Detachable base	Allows to secure magazine in place. When removed, provides access to trigger group.
7	Magazine catch	Retains and releases the magazine.
8	Hand rest / Grip	Provides a control grip for the firing hand.
9	Chassis	Ergonomics fiber stock with the micro-chassis system to precisely secure the action.
10	Sling stud	Provides a means to attach slings.
11	Bottom M-LOK interface	Provides a means to attach various types of M-LOK accessories.
12	Side M-LOK interface	Provides a means to attach various types of M-LOK accessories.

## 2. CADEX STRIKE NUKE EVO SPECIFICATION

### 2.1. Chassis description

The Cadex Chassis is an integrated system to enhance the handling and portability of sniper rifles. The chassis is designed to make the rifle a modular system that allows the sniper to tailor it to specific needs. It incorporates a long fore end with modular rails position, adjustable butt stock, and various sling mounting points.

The fore end provides a mounting surface for accessory rails. A rail and/or bipod stud is located at the forward-most bottom of the chassis. This positions the bipod far forward of the rifles center of mass, which allows the shooter better control of the rifle under recoil, for better shot follow through.

The integrated butt stock is user adjustable for length of pull, recoil pad height, and cheek piece height and side position.

The chassis features an aluminum magazine well which uses standard magazines (AICS type) and incorporate a lever type magazine catch.

### 2.2. Chassis installation

#### Overview

The Strike Nuke Evo major components are preassembled. The installation process consists of the following:

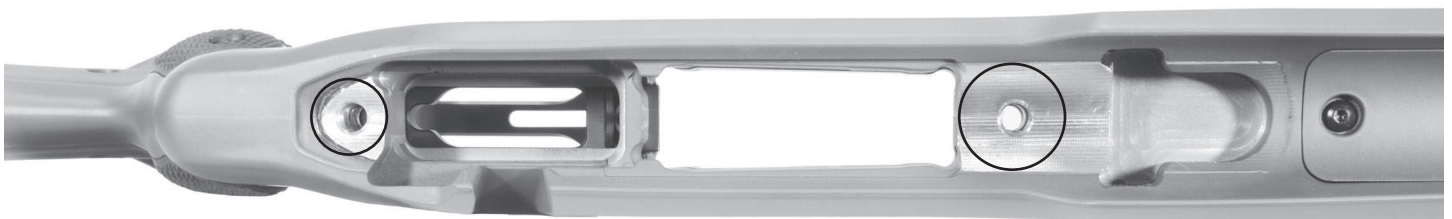
- A. Installation of the rifle barreled action into the chassis frame.
- B. Installation of accessories to the chassis.

Please refer to section 3.2. for the threadlocker application procedure prior to proceed to the chassis assembly.

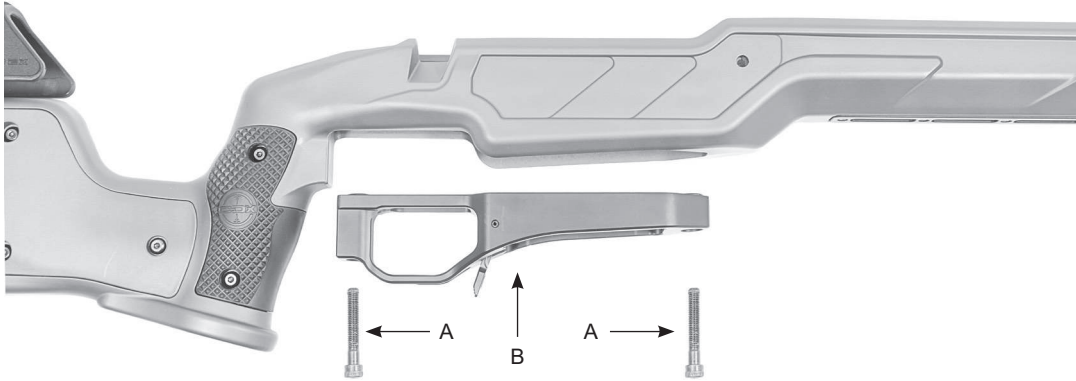
#### A. Installation of the rifle barreled action into the chassis frame

The barreled action is held to the chassis frame by conventional method using a front and rear action screw. The action rests on a precise machined aluminum center section to support and center the action. Recoil is transferred via the rifle recoil lug to the rear surface of the lug mortise depicted below.

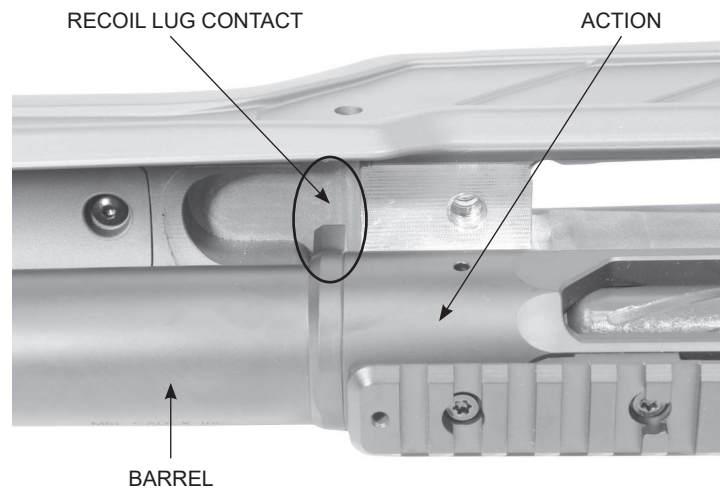
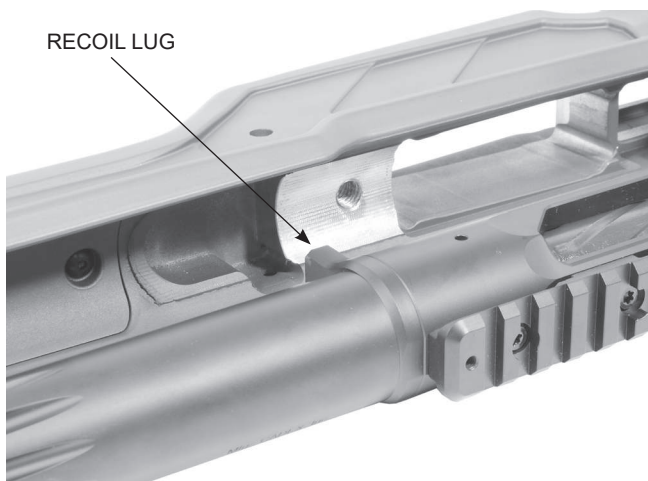
NOTE: Verify the resting area is free of dirt, dent, or marks before installing the action into the chassis.



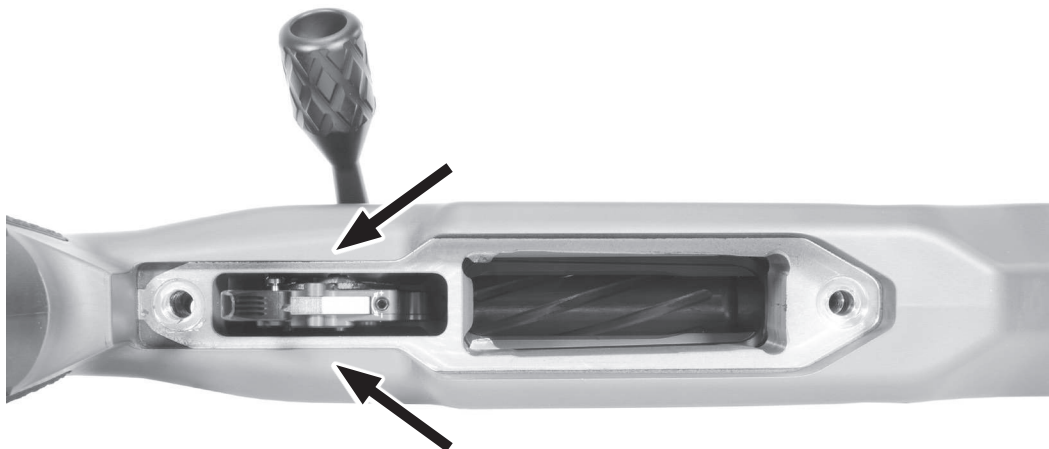
1. Remove the two (2) cap screws (item A) from the bottom of the magazine well (item B), and remove the mag well assembly from the chassis.

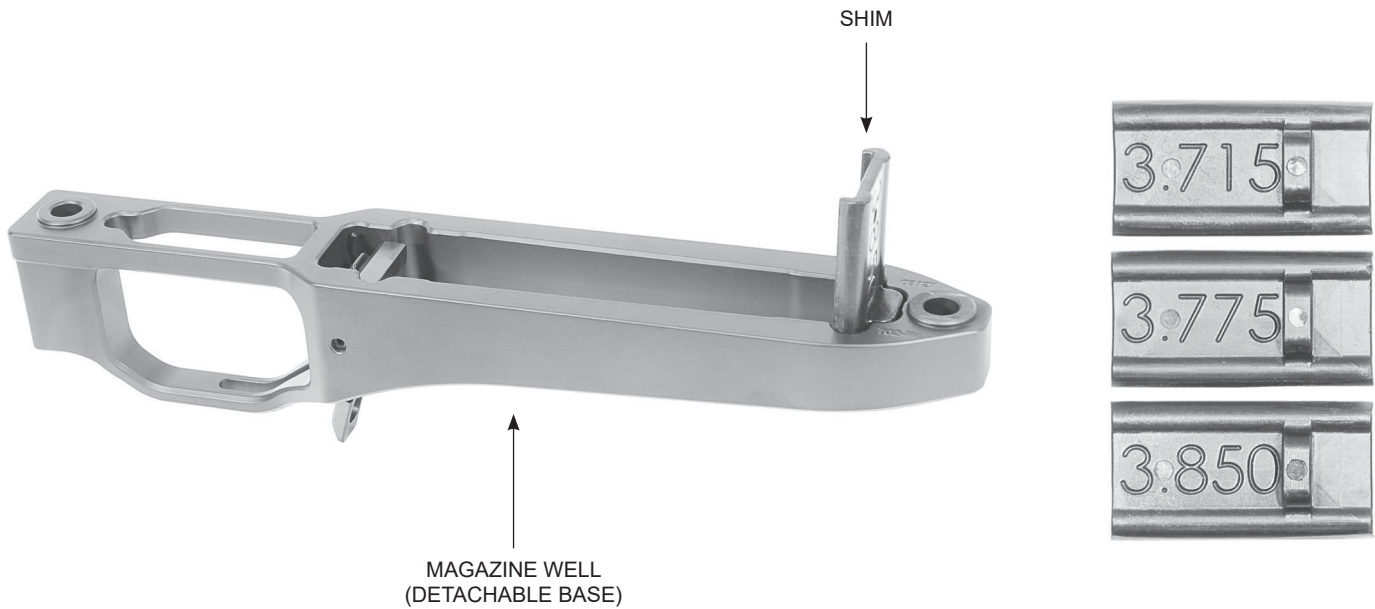


2. Insert the barreled action (with the trigger already installed) into the chassis frame.
3. Verify that the receiver fully inserts into the chassis and the rear face of the recoil lug is bearing against the rear face of the recoil lug slot in the chassis.
4. Verify clearance on either side of the recoil lug and the front face. The single contact point for the recoil lug is the rear face against the back face of the recoil lug recess as depicted below.



5. Hold the barreled action in place and turn over to check the fit of the trigger mechanism; identify any clearance issues between the trigger, safety catch and the corresponding recess in the chassis, as shown below.

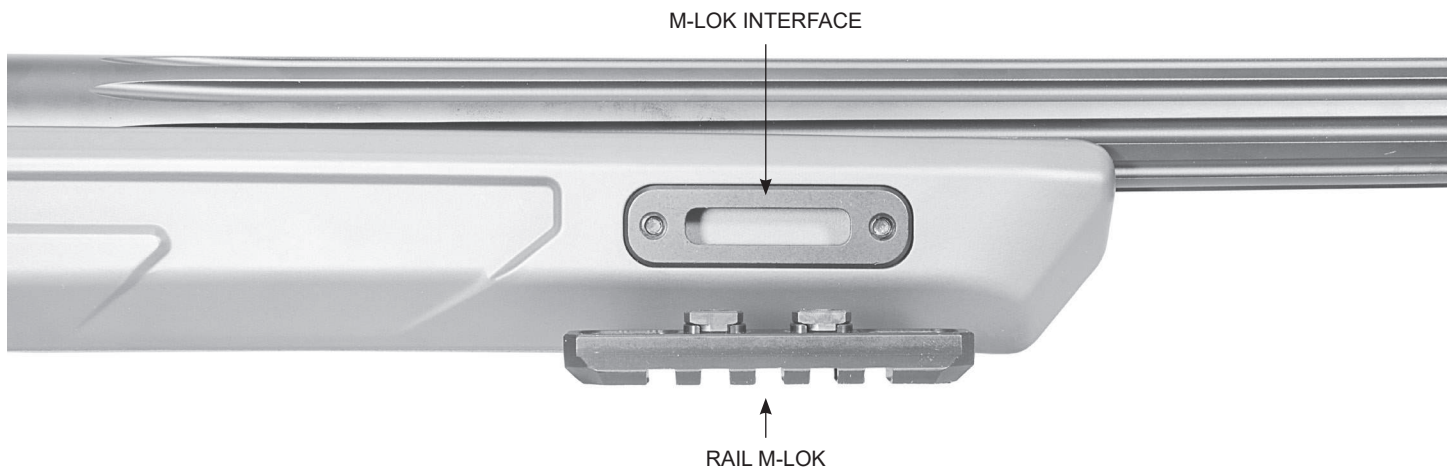




6. Install the proper magazine shim into the magazine well (for long action chassis only). The number on the shim is for the magazine length (AICS style mags).
7. After confirming there are no clearance issues with the trigger or safety mechanisms, reinstall the magazine well and insert and start the front and rear action/receiver screws. Do not fully tighten at this time.
8. Once both screws are in place, point the muzzle at the sky to ensure the recoil lug is firmly resting against the chassis lug recess contact point. Then, tighten the two action screws. Alternate tightening between both front and rear screws to keep even tension. Continue this process until full torque is reached (refer to Appendix B for torque specification).
9. Insert a magazine into the magazine well and confirm proper feeding with a dummy or inert cartridge.

## B. Installation of accessories to the chassis.

The Strike Nuke Evo can accept various M-LOK accessories to permit the user to customize his chassis. Please refer to Appendix B for torque specification.



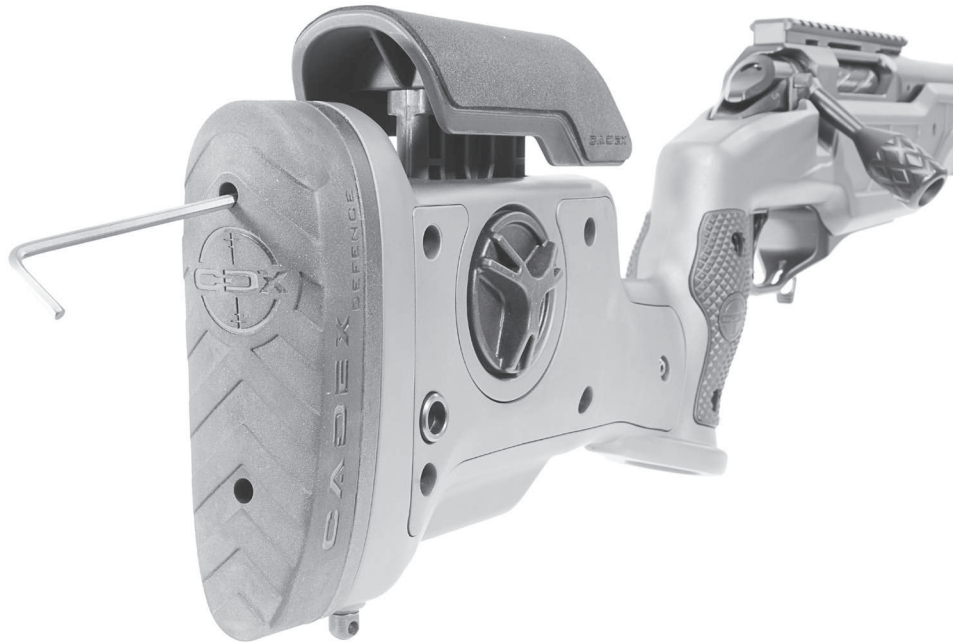


## 2.3. Operation and stock controls

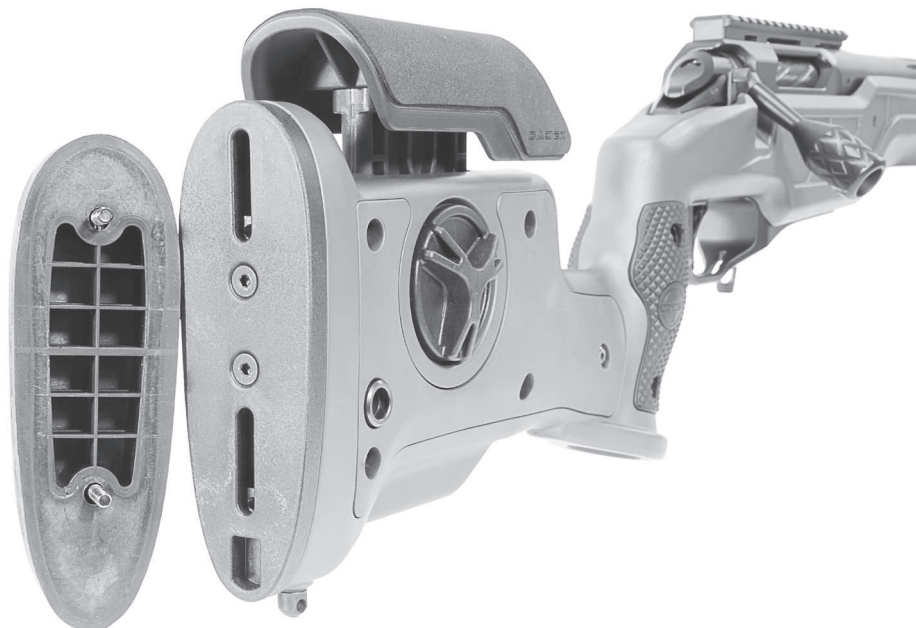
### A. Adjusting the length of pull

The length of pull (LOP) can be adjusted with spacer between the recoil pad and the buttstock.

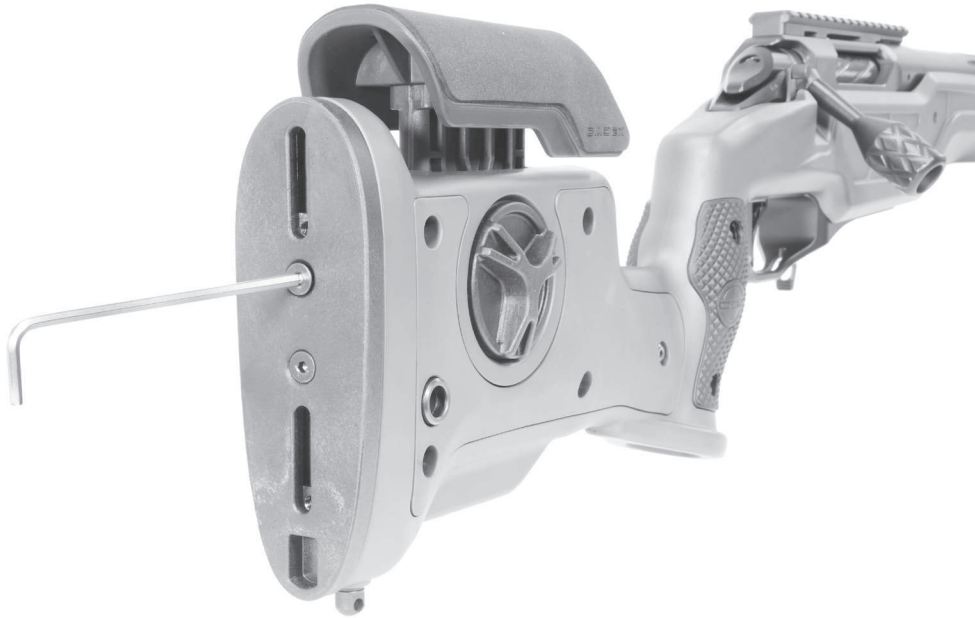
1. Uninstall the recoil pad by unscrewing the two (2) screws located inside the pad (with an 1/8" Allen key). The screws should stay in the recoil pad.



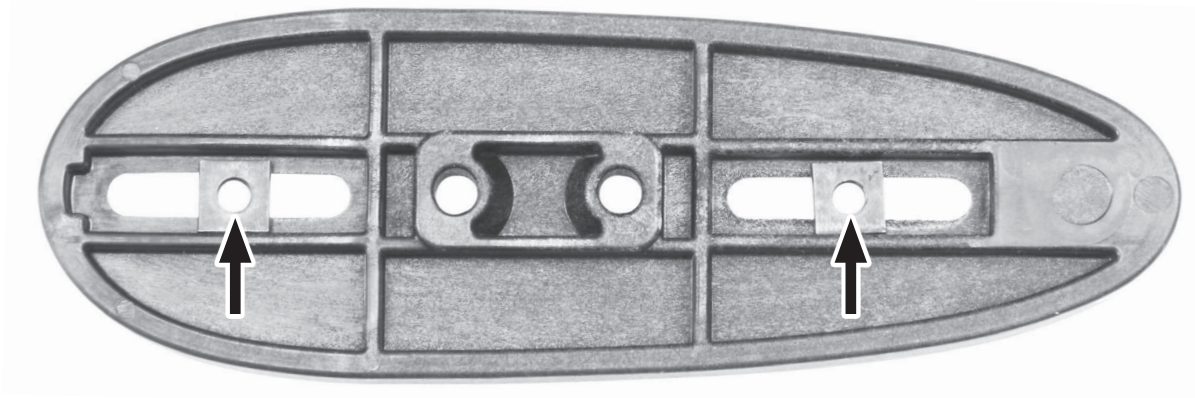
2. Remove the pad from the buttstock.



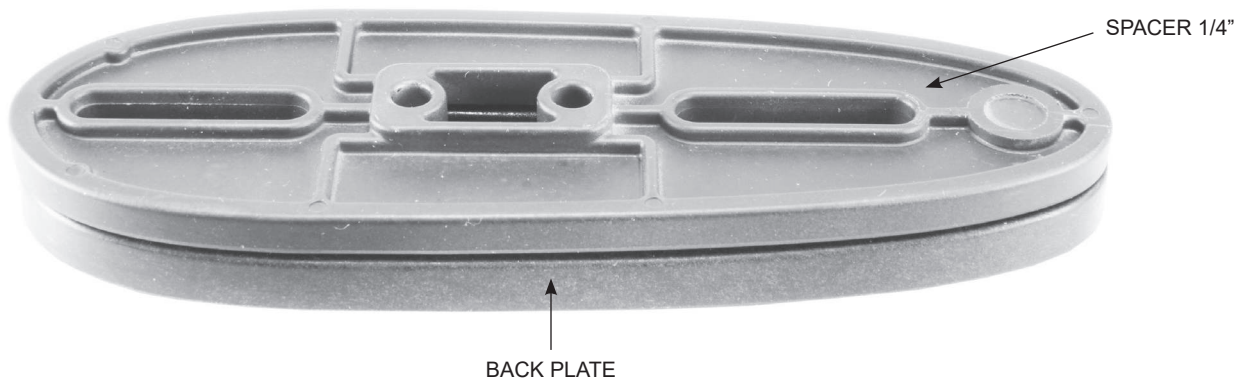
3. Remove the 2 screws holding the back plate.



4. Remove the back plate and pay attention to keep the two square nut that hold the recoil pad.



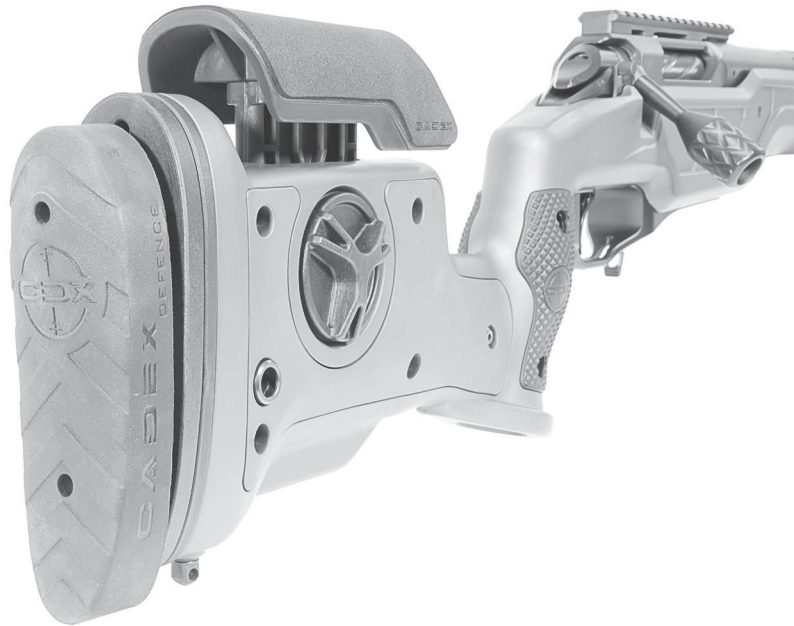
5. Install the spacer (Qty of 1, 2 or 3) on the top of the back plate. Pay attention to place the spacer in the correct orientation.



6. With the screws removed at step 3, reinstall the back plate and the spacer to the buttstock. Use a torque of 18 lbs-in.



7. Reinstall the recoil pad.



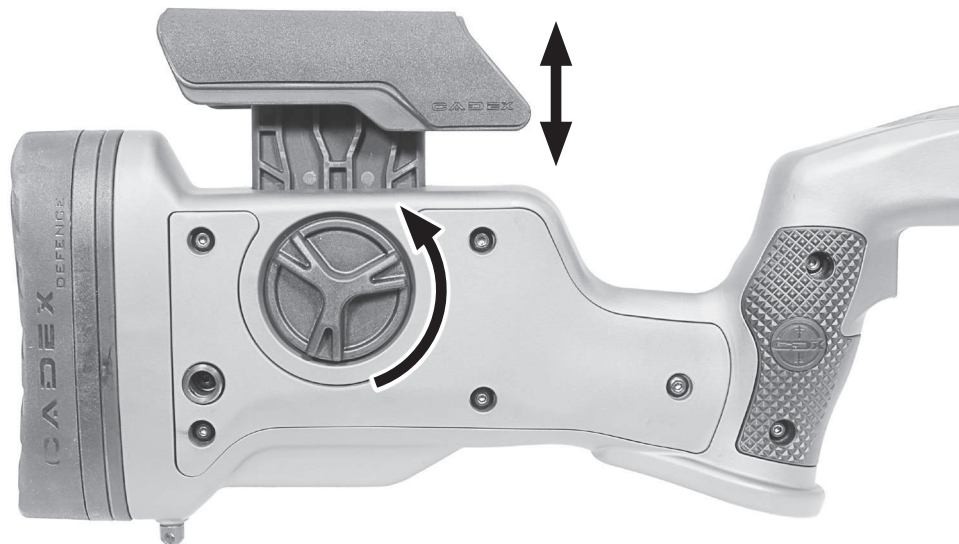
## **B. Adjusting the height of the recoil pad**

The recoil pad can be adjust in height (total travel of 1 inch) to accommodate various shooter position.

1. Loosen the two (2) screws located inside the pad (with an 1/8" Allen key). One turn shall be sufficient.
2. Adjust the height of the recoil pad to the desired position and tight the two screws to secure the pad in position (the same procedure apply when the spacer are used).

### C. Adjusting the height of cheek piece

1. Turn the knob counter clockwise (approx. half turn) to loosen the cheek piece. **WARNING! The cheek piece is spring loaded and it will extend upwards when the knob is loosened.**

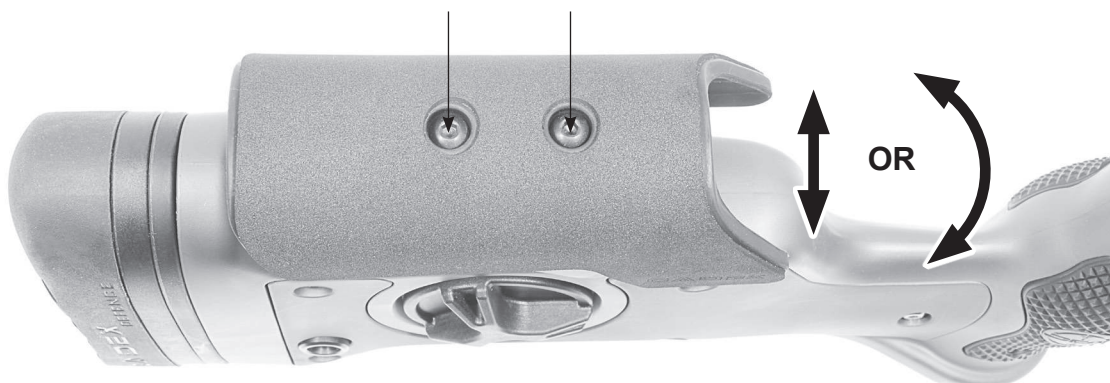


2. Adjust the height of the cheek piece (total travel of 1 inch) to the desired position and tight the knob clockwise to secure it.

### D. Adjusting the lateral position of the cheek piece

The cheek rest is adjustable right and left (total travel of 5/16 inches), plus in angle for a perfect alignment with the rifle scope eyepiece.

1. Loosen the two (2) screws located on the top of the cheek piece (with an 1/8" Allen key). One turn shall be sufficient.



2. Adjust the position of the cheek piece to the desired position and tight the two screws to secure it in position.

This document contains information that is proprietary to Cadex Inc. Neither this document nor the information contained herein shall be used, duplicated or communicated by any means to any third party, in whole or in part, except with the prior written consent of Cadex Inc. This restrictive legend shall not be altered or obliterated from this document.

This page intentionally left blank

### 3. CLEANING AND MAINTENANCE

**WARNING!** Verify the chamber and magazine to make sure there are no cartridges in the firearm prior to any cleaning and maintenance on the firearm.

#### 3.1. Chassis maintenance

1. When tightening fasteners do not over tighten. Where a torque is specified, employ an accurate in-lbs torque wrench. Use correct fitting tools to loosen or tighten fasteners.
2. When operating the controls of the stock, do not use excessive force.
3. To clean the chassis, use a soft brush to remove accumulated sand, mud and debris. Wipe down surfaces using soft rags. Do not use harsh chemicals or any abrasive materials to clean the chassis.
4. Small amounts of a light lubricant can be applied to the stock hinge and locking mechanism.

#### 3.2. Threadlocker application procedure

Your firearm came with a threadlocker liquid that need to be applied on screws prior assembly and torque. The threadlocker will prevent screws loosening from vibration and shock and provide screws lubricity during torque procedure.

- A. Before applying threadlocker, verify that both thread on screws and hole are free from rust, dirt or debris, oil, and grease.
- B. For through holes, apply threadlocker directly on screws (fig 1).
- C. For blind holes, apply threadlocker on thread hole (fig 2).

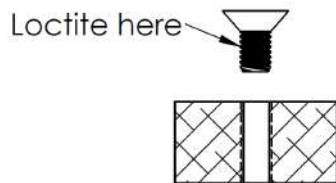


Fig.1 Through Hole

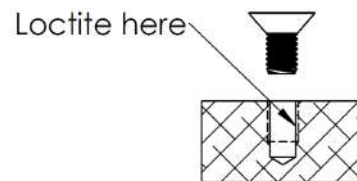


Fig.2 Blind Hole

- D. Once threadlocker is applied, finger tight all screws and then torque them to the appropriate torque.
- E. We recommended to let the threadlocker cure for a 24h period before using your firearm.

### 4. TECHNICAL AND WARRANTY SUPPORT

For technical and warranty support, the point of contact is Cadex Defence:

#### Cadex Defence

755 avenue Montrichard, Saint-Jean-sur-Richelieu  
Quebec, Canada J2X 5K8  
Tel: 450-348-6774 • [www.cadexdefence.com](http://www.cadexdefence.com)



### Limited Lifetime Warranty

At Cadex Defence we take a great sense of pride in the products that we design and produce as well as our customer service. If you are experiencing any problems, we appreciate your honesty with the situation and we will do what is right to help you as we really care for our customers.

We warrant products manufactured by Cadex Inc. to be free of defects in material or workmanship/manufacturing for **one year** following the initial owner's purchase. Cadex Defence reserves the right to cover under warranty, at its own discretion, its products for the **lifetime** of the product if we feel that it didn't meet our high standards of performance. Cadex reserves the right to use its discretion to warranty its products in special scenarios that have or may present themselves that are not noted in this document.

Cosmetic wear and normal wear items including but not limited to the barrel, extractors, ejectors, and springs are not covered by the warranty and it is the responsibility of the owner to assure the weapon is properly maintained.

Your Cadex Defence product was manufactured to perform properly with the original parts as designed. Altering or modifying parts is dangerous and will void the warranty. It is your responsibility to make sure any parts you install are made for this firearm, installed correctly, and that neither the originals nor the replacement parts are altered or changed. Firearms are complex precision tools with many parts that must operate correctly with other parts in order to maintain proper and safe operation. Putting your firearm together improperly or with incorrect or modified parts can result in a damaged firearm, serious personal injury, or death to you and/or others through malfunction. Always have a qualified armorer or gunsmith work on your Cadex Defence system or other firearms.

Please have the following information ready. You can contact us via email or toll free at the contact information listed below.

- Product Model
- Serial Number
- Date of Purchase
- Point of Purchase

### CADEX INC.

755 Avenue Montrichard, St-Jean-sur-Richelieu, Quebec, Canada, J2X 5K8

[customerservice@cadexinc.com](mailto:customerservice@cadexinc.com)

Office: 450-348-6774 (CANADA) • 802-466-4003 (USA)

Toll free: 1-888-348-6774

### A message from the owner

*For Cadex, customer satisfaction is very important.*

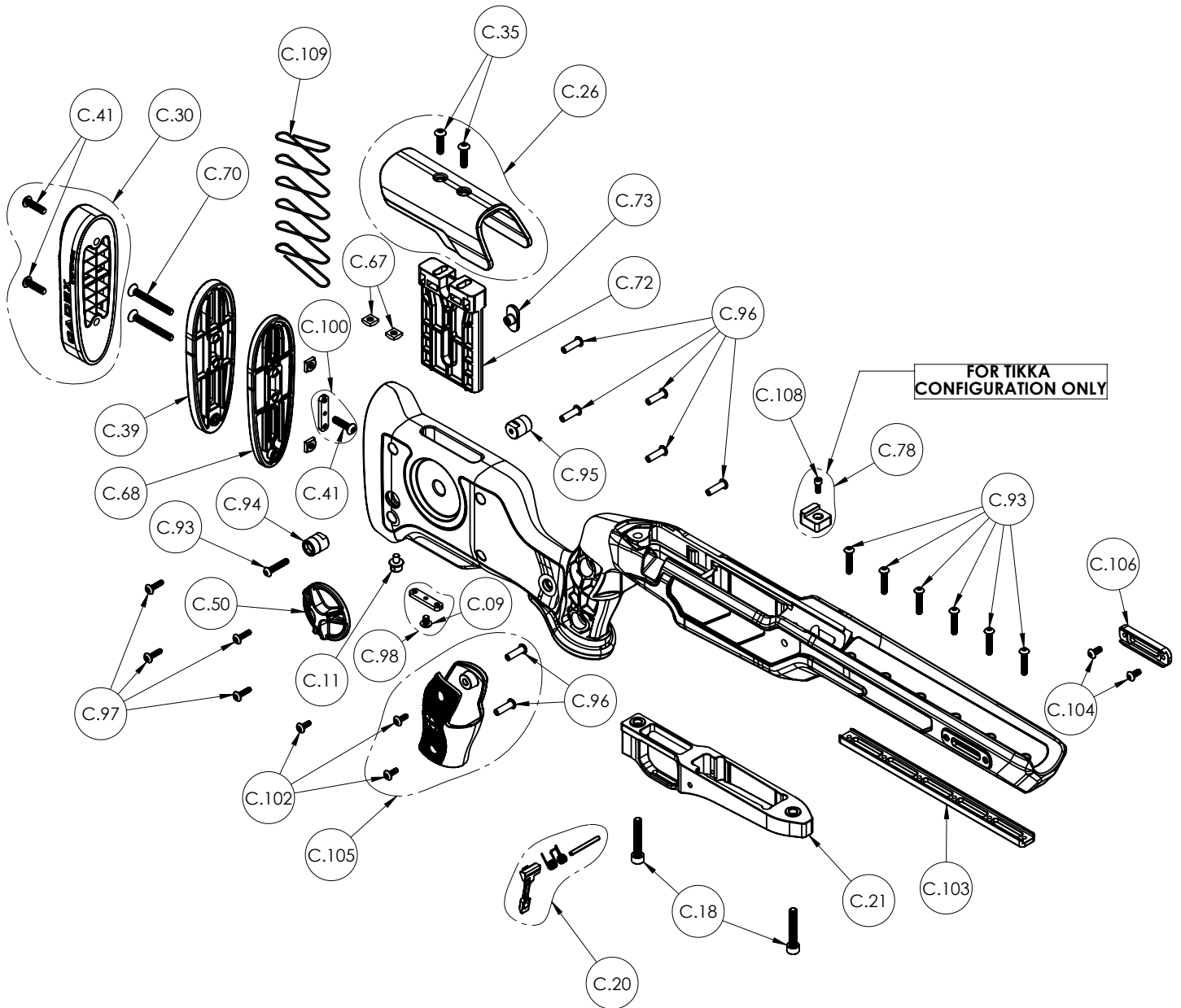
*If you experience a problem with one of our dealers or distributors don't wait for the situation to get worse before bringing it to our attention. We firmly believe that with good communication and a little goodwill from both sides we will be able to find a solution to your problem.*

*Please contact us as soon as possible if you ever encounter any issues with one of our products.*

- Serge Dextraze, Cadex CEO

# 5. APPENDIX A - SPARE PARTS

## 5.1. Chassis spare parts

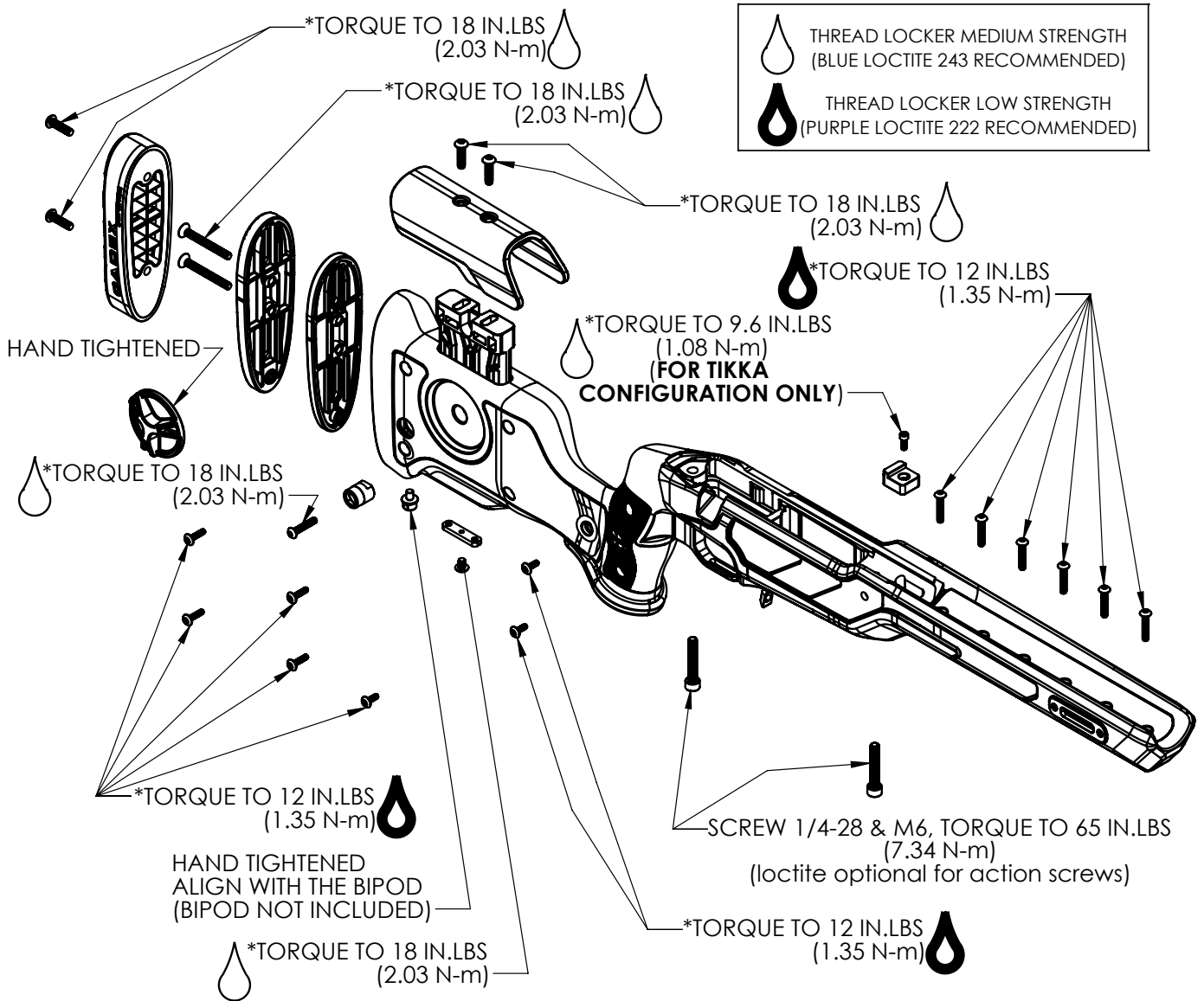




ITEM	DESCRIPTION	QTY*
C.09	BHSCS 10-32 X 1/4, SS	1
C.11	BIPOD STUD (WASHER INCLUDED)	1
C.18	SHCS 1/4-28 X 1.5", SS, BO	2
C.20	MAGAZINE CATCH KIT	1
C.21	NUKE DETACHABLE BASE (WITH MAGAZINE CATCH)	1
C.26	NUKE CHEEK PIECE KIT	1
C.30	NUKE BUTT PAD KIT	1
C.35	BHSCS 10-32 X 5/8", SS	2
C.39	BUTT STOCK BACK PLATE	1
C.41	BHSCS 10-32 X 3/4", SS	3
C.50	ADJUSTMENT KNOB KIT	1
C.67	SQUARE NUT 10-32	4
C.68	NUKE BUTT PAD SPACER	1
C.70	FHSCS 10-32 X 1 3/4 SS	2
C.72	NUKE CHEEK PIECE SUPPORT	1
C.73	CHEEK PIECE T-NUT	1
C.78	RECOIL LUG SAKO TRG-42	1
C.93	BHSCS 8-32 X 7/8 SS	7
C.94	FLUSH CUP SLING MOUNT (RIGHT)	1
C.95	FLUSH CUP SLING MOUNT (LEFT)	1
C.96	BINDING POST 6-32	7
C.97	MALE SCREW 6-32 LONG	4
C.98	BUTTSTOCK ACCESSORIES ADAPTOR KIT	1
C.100	BUTT PLATE ADAPTOR KIT	1
C.102	MALE SCREW 6-32 SHORT	3
C.103	BOTTOM M-LOK ADAPTOR PLATE	1
C.104	BHSCS 10-32 X 3/8 SS	4
C.105	NUKE GRIP KIT	1
C.106	SIDE M-LOK ADAPTOR PLATE	2
C.108	SHCS 6-40 X 3/8, SS	1
C.109	NUKE CHEEK PIECE SPRING	1

\*Quantity may vary depending of chassis model

## 6. APPENDIX B - RECOMMENDED TORQUE SETTING



\*Image for reference only

### WARNING!

Regardless of shipping method, Cadex highly recommends checking each preset screws torque preventively.

If your order shipped by plane, and as such, withstood high amounts of vibrations, you MUST verify each preset screws for the right torque before using the weapon by referring to the figure above.

This document contains information that is proprietary to Cadex Inc. Neither this document nor the information contained herein shall be used, duplicated or communicated by any means to any third party, in whole or in part, except with the prior written consent of Cadex Inc. This restrictive legend shall not be altered or obliterated from this document.





## **CADEX INC.**

HEAD OFFICE

755 ave. Montrichard,  
Saint-Jean-sur-Richelieu, QC  
Canada, J2X 5K8

Tel: 450-348-6774

Toll free: 1-888-348-6774

Fax: 450-348-7157



**[WWW.CADEXDEFENCE.COM](http://WWW.CADEXDEFENCE.COM)**