

CHASSIS SYSTEM
USER MANUAL

STRIKE SERIES

TUNDRA STRIKE





Important usage information for:

Rev. 1.5 - 20220120

CADEX TUNDRA STRIKE

If you have any remark about your new Cadex chassis, please contact us:

Cadex Inc.
755 avenue Montrichard, Saint-Jean-sur-Richelieu
Quebec, Canada J2X 5K8
Phone: 450-348-6774
www.cadexdefence.com

Please use the following spaces to record information about your new firearm.

Model: _____

Serial number: _____

Bought from: _____

Purchase date: _____

Thank you for choosing a Cadex Tundra Strike

Congratulations on your purchase of a Cadex Tundra Strike. Cadex chassis are one of the most accurate, sophisticated and finest constructed bolt-action rifle chassis available today. The Cadex chassis represents a new generation of chassis, designed with improved features for superior performance. With proper care, your Cadex chassis should give you many years of dependable, enjoyable service.

YOU ARE RESPONSIBLE FOR FIREARM SAFETY

Failure to heed any of the following warnings could result in serious injury or death. As a gun owner, you accept a set of demanding responsibilities. How seriously you take these responsibilities can be the difference between life and death. There is no excuse for careless or abusive handling of any firearm. At all times, handle this firearm and all other firearms, with intense respect for their power and potential danger. Please read and understand all of the cautions, warnings, notices, proper handling procedures and instructions outlined in this user manual before using your new chassis.

WARNING! Any modifications and/or disassembly of chassis other than those described in this manual could void the warranty.

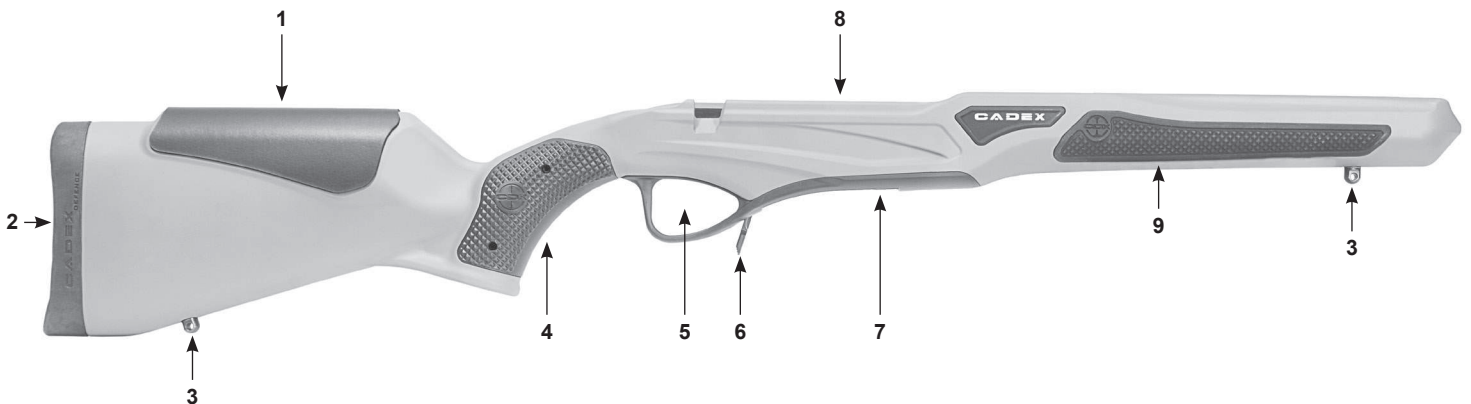
This document contains information that is proprietary to Cadex Inc. Neither this document nor the information contained herein shall be used, duplicated or communicated by any means to any third party, in whole or in part, except with the prior written consent of Cadex Inc. This restrictive legend shall not be altered or obliterated from this document.

Contents

1.	CADEX CHASSIS FEATURES	5
1.1.	TUNDRA STRIKE	5
2.	CADEX TUNDRA STRIKE SPECIFICATION	6
2.1.	Chassis description	6
2.2.	Chassis installation	6
	Overview	6
A.	Installation of the rifle barreled action into the chassis frame	6
2.3.	Stock adjustments	11
A.	Changing the barrel cover (optional)	11
B.	Add a new bipod stud location (optional)	13
3.	CLEANING AND MAINTENANCE	14
3.1.	Chassis maintenance	14
3.2.	Threadlocker application procedure	14
4.	TECHNICAL AND WARRANTY SUPPORT	14
5.	APPENDIX A - SPARE PARTS	16
5.1.	Chassis spare parts	16
6.	APPENDIX B - RECOMMENDED TORQUE SETTING	18

1. CADEX CHASSIS FEATURES

1.1. TUNDRA STRIKE



KEY	PART	FUNCTION
1	Cheek pad	Neoprene cheek pad.
2	Recoil pad	Cadex recoil pad.
3	Sling stud / Bipod stud	Provides a means to attach various types of bipods or rifle slings.
4	Hand rest / Grip	Rubberrized grip insert provides a control grip for the firing hand.
5	Trigger guard	Oversized trigger guard and magazine release for easy manipulation with gloves.
6	Magazine catch	Retains and releases the magazine.
7	Detachable base	Allows to secure magazine in place. When removed, provides access to trigger group.
8	Chassis	Ergonomics fiber stock with the micro-chassis system to precisely secure the action.
9	Front grip	Rubberized grip insert.

2. CADEX TUNDRA STRIKE SPECIFICATION

2.1. Chassis description

The Tundra Strike chassis is an integrated system to enhance the handling and portability of hunting rifles. The chassis is designed to make the rifle a modular system that allows the hunter to tailor it to specific needs. It incorporates an adjustable butt stock, and various sling-mounting points.

A bipod stud is located at the forward-most bottom of the chassis. This positions the bipod far forward of the rifle's center of mass, which allows the shooter better control of the rifle under recoil, for better shot follow through.

The integrated butt stock is user adjustable for length of pull with recoil pad spacers.

The chassis features a plastic magazine well, which uses standard magazines (AICS type), and an incorporated lever type magazine catch.

2.2. Chassis installation

Overview

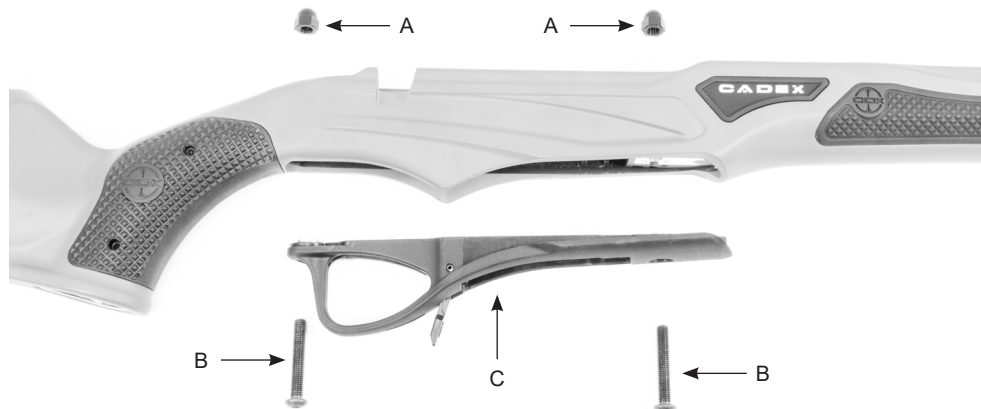
The Tundra Strike major components are preassembled. The installation process consists of the following:

Please refer to section 3.2. for the threadlocker application procedure prior to proceed to the chassis assembly.

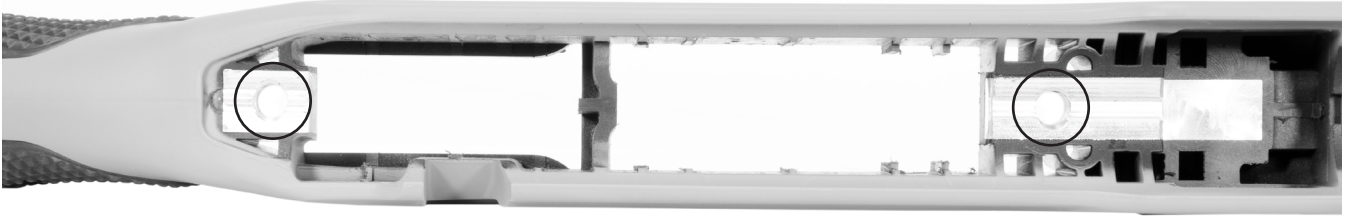
A. Installation of the rifle barreled action into the chassis frame

The barreled action is held to the chassis frame by conventional method using a front and rear action screw. The action rests on a precise machined aluminum center section to support and center the action. Recoil is transferred via the rifle recoil lug to the rear surface of the lug mortise depicted below.

1. Remove the two (2) caps (items A), the two (2) cap screws (items B) from the bottom of the magazine well (item C) and remove the mag well assembly from the chassis.



NOTE: Verify the resting area is free of dirt, dent or marks before installing the action into the chassis.

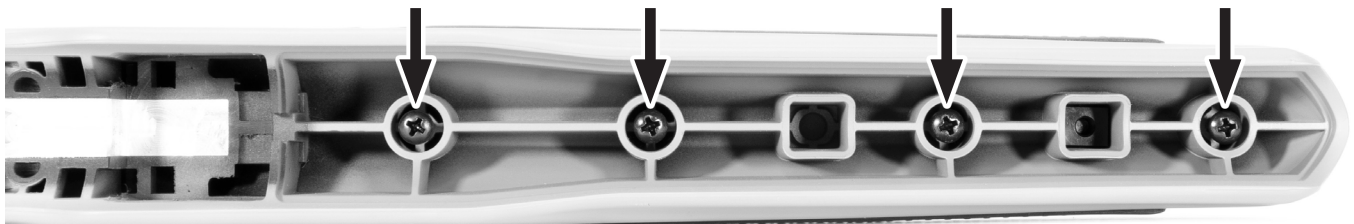


2. Choose the appropriate barrel cover for your barrel.

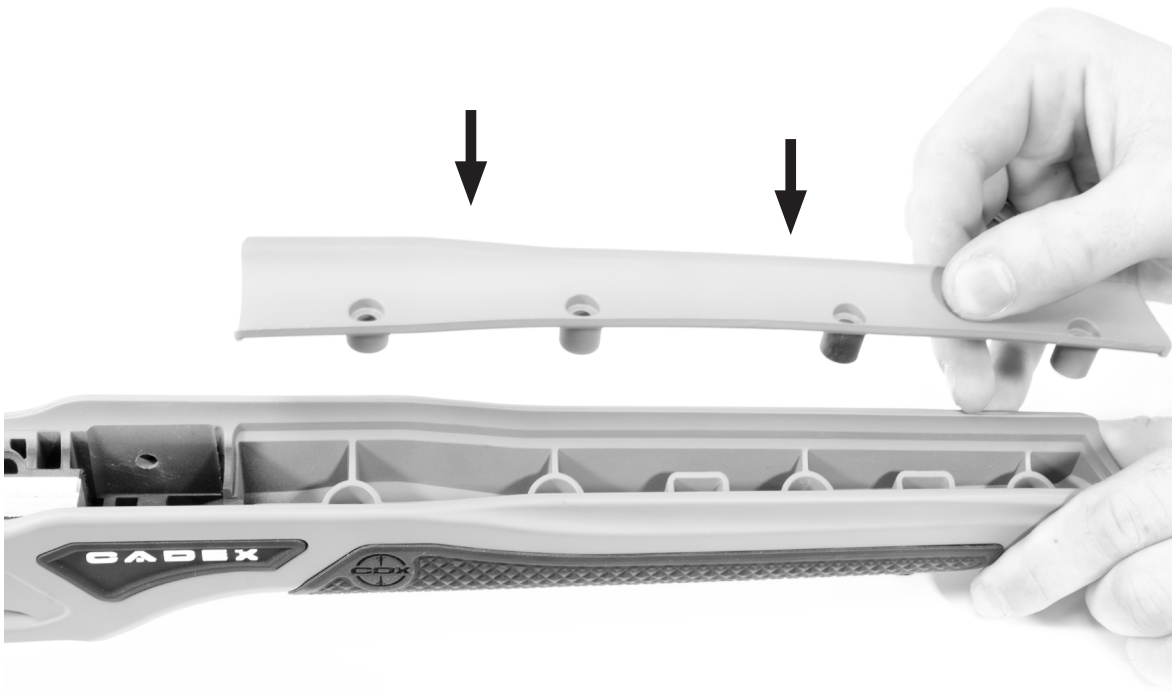
- **Sporter barrel cover:** Cadex sporter barrel or any barreled action from other companies
- **Carbon barrel cover:** Carbon fiber match grade barrel



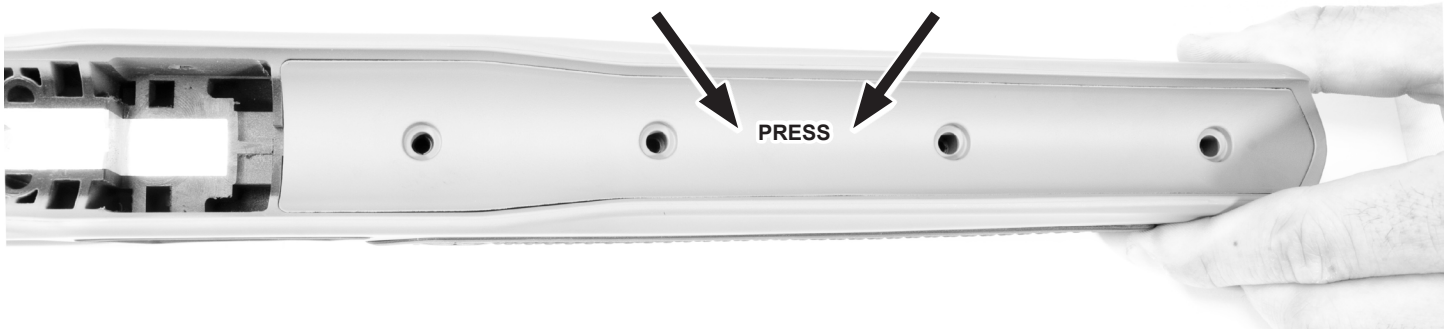
3. Remove the four (4) screws holding the cover to the chassis with a Phillips #2 screwdriver. Keep the screws for the next step.



4. Insert the barrel cover in the appropriate slot designed for a perfect fit with the barrel cover and the chassis.

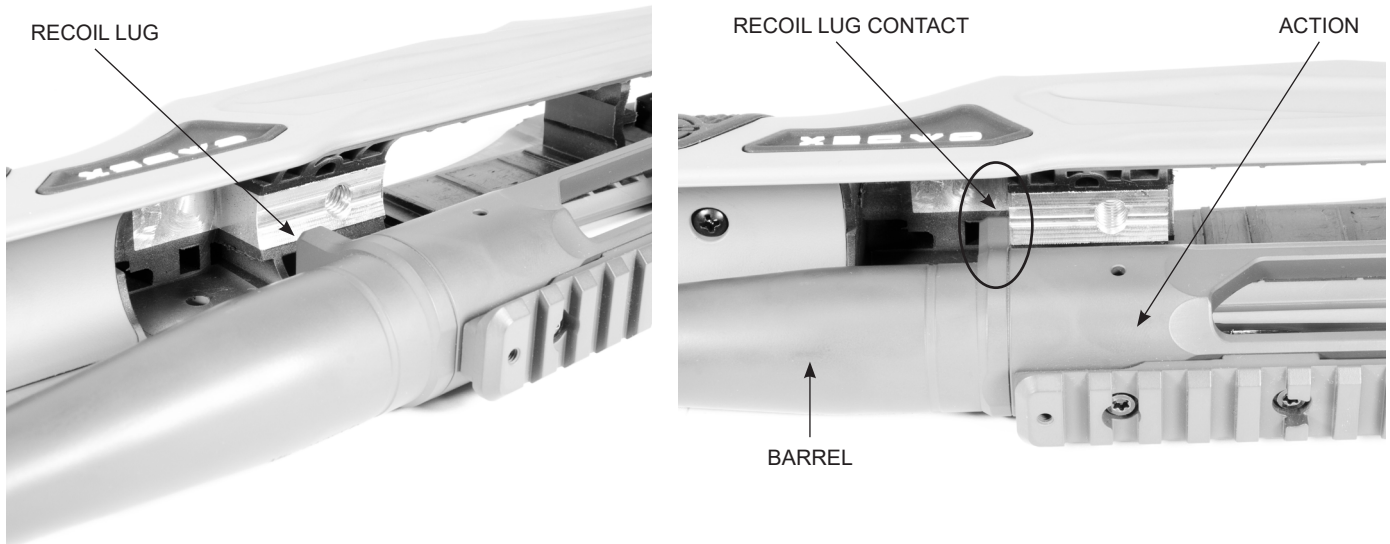


5. Press firmly to clip the barrel cover to the chassis. Make sure it is well positioned. The barrel cover must be flush to the chassis.

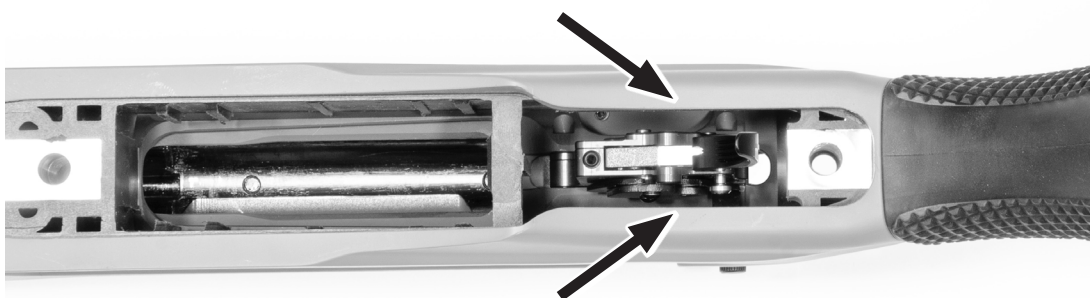


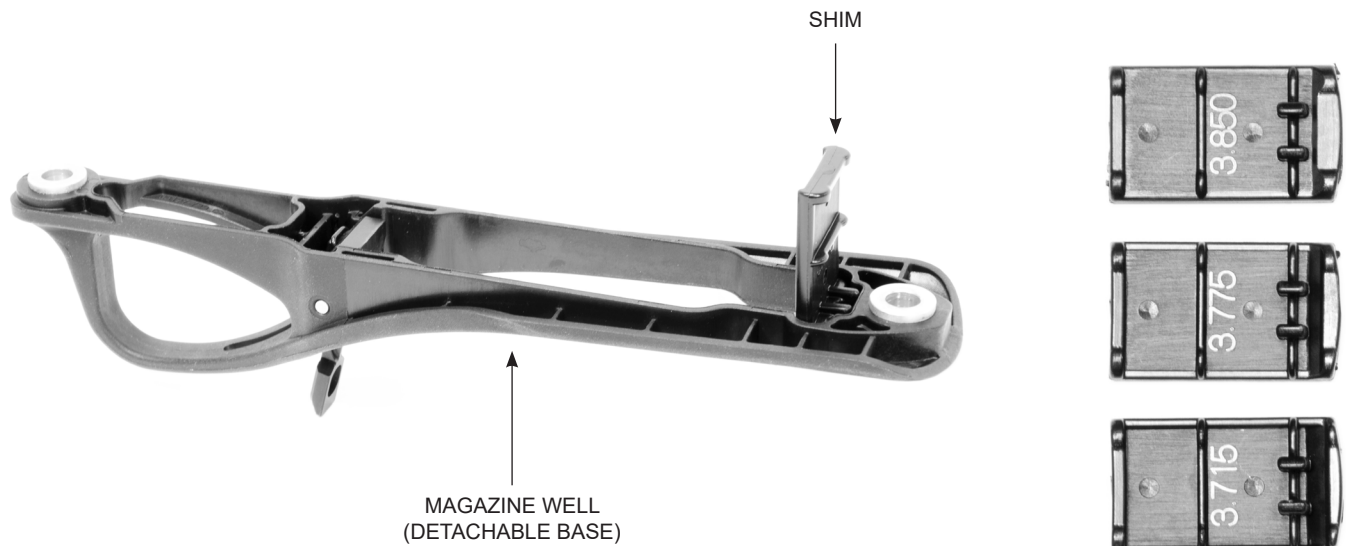
6. Insert the four (4) screws from step 2.2.A-3 with a Phillips #2 screwdriver and refer to Appendix B for torque specification.

7. Insert the barreled action (with the trigger already installed) into the chassis frame.
8. Verify that the receiver fully inserts into the chassis and the rear face of the recoil lug is bearing against the rear face of the recoil lug slot in the chassis.
9. Verify clearance on either side of the recoil lug and the front face. The single contact point for the recoil lug is the rear face against the back face of the recoil lug recess as depicted below.



10. Hold the barreled action in place and turn over to check the fit of the trigger mechanism; identify any clearance issues between the trigger, safety catch and the corresponding recess in the chassis, as shown below.





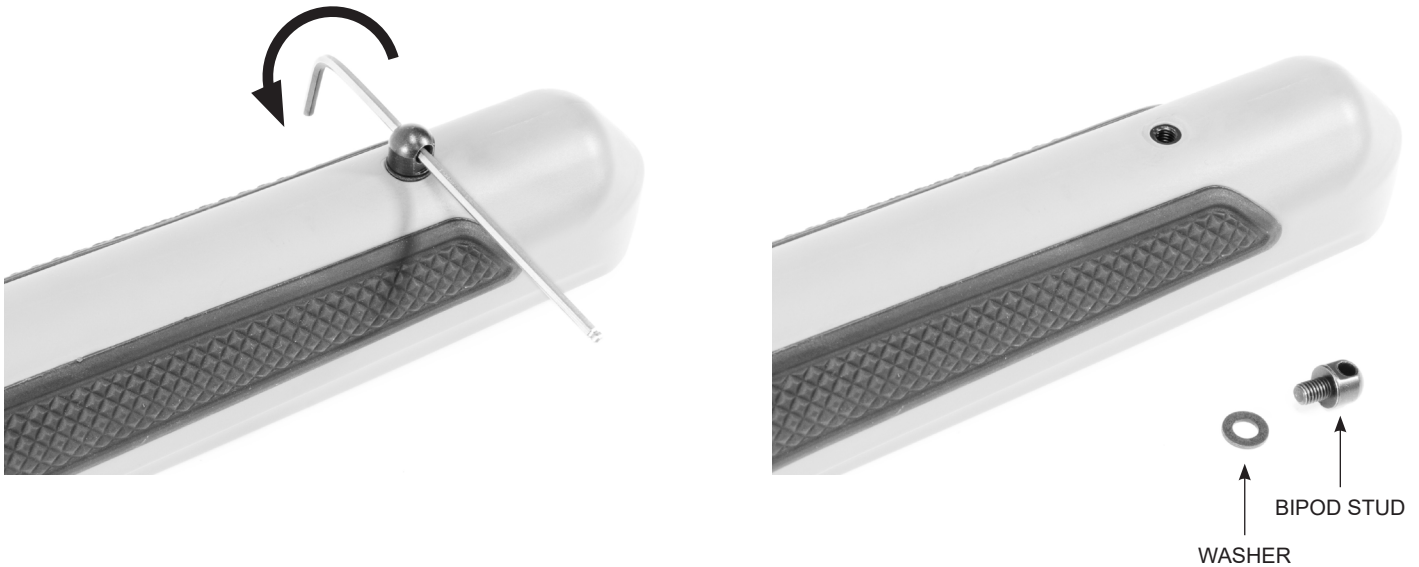
11. Install the proper magazine shim into the magazine well (for long action chassis only). The number on the shim is for the magazine length (AICS style mags).
12. After confirming there are no clearance issues with the trigger or safety mechanisms, reinstall the magazine well and insert the front and rear action/receiver screws. Do not fully tighten at this time.
13. Once both screws are in place, point the muzzle at the sky to ensure the recoil lug is firmly resting against the chassis lug recess contact point. Then, tighten the two action screws. Alternate tightening between both front and rear screws to keep even tension. Continue this process until full torque is reached (refer to Appendix B for torque specification).
14. Insert a magazine into the magazine well and confirm proper feeding with a dummy or inert cartridge.

2.3. Stock adjustments

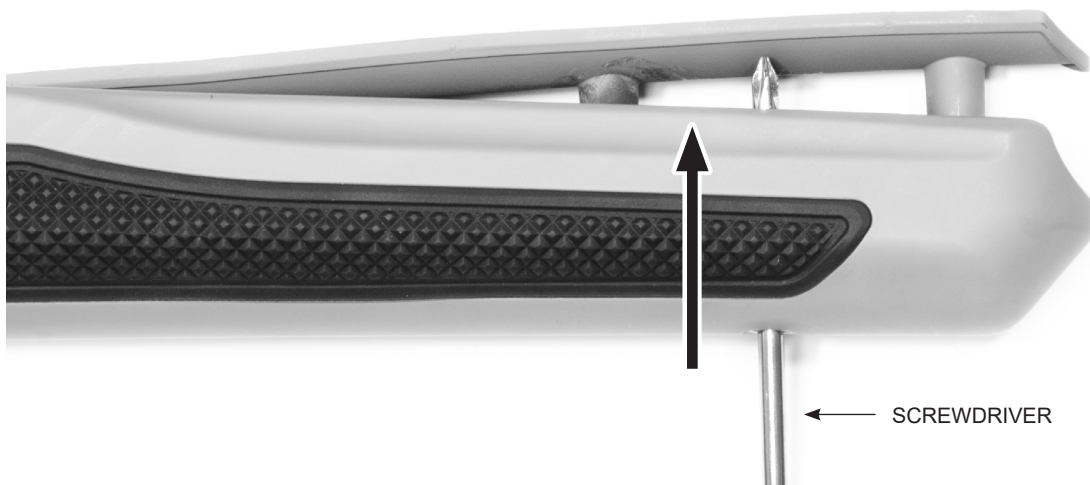
A. Changing the barrel cover (optional)

The barrel cover can be changed to fit the Carbon barrel or the Sporter barrel for a nicer fit.

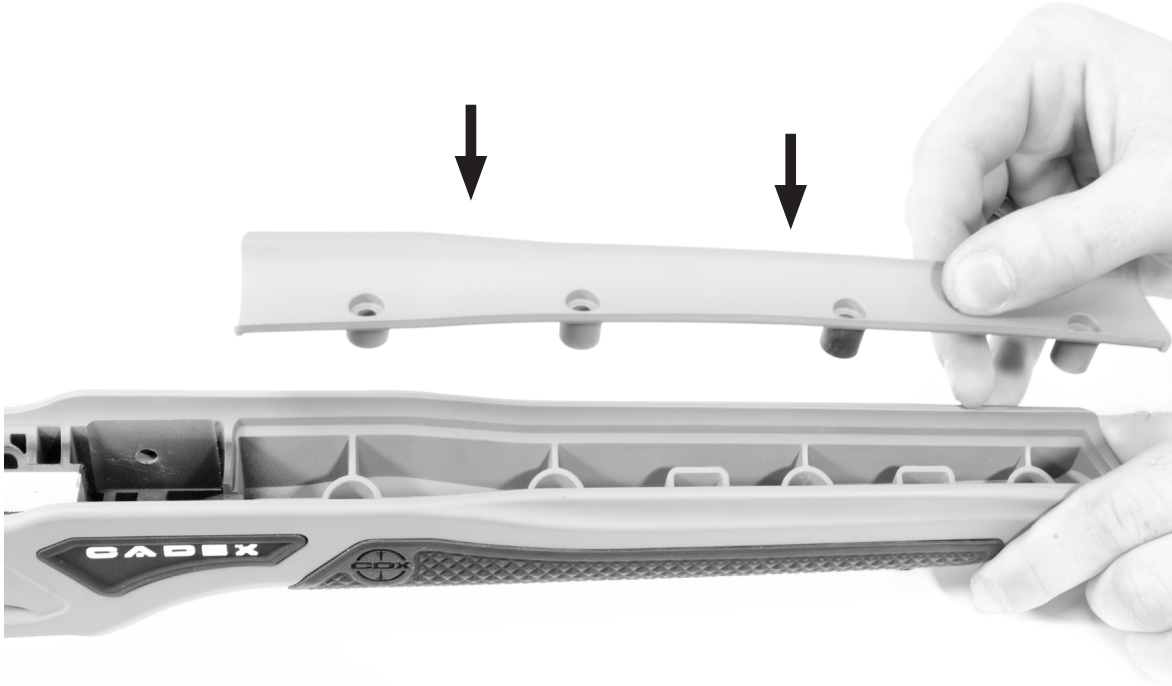
1. Remove the four (4) screws (with a Phillips #2 screwdriver) holding the cover to the chassis (keep the screws for the next steps).
2. Remove the bipod stud located on the front of the chassis. Use an 1/8" Allen key or any tool with a diameter equal or inferior to 1/8" and insert it in the hole of the bipod stud. Then, turn counter clockwise to remove it and make sure to not loose the washer.



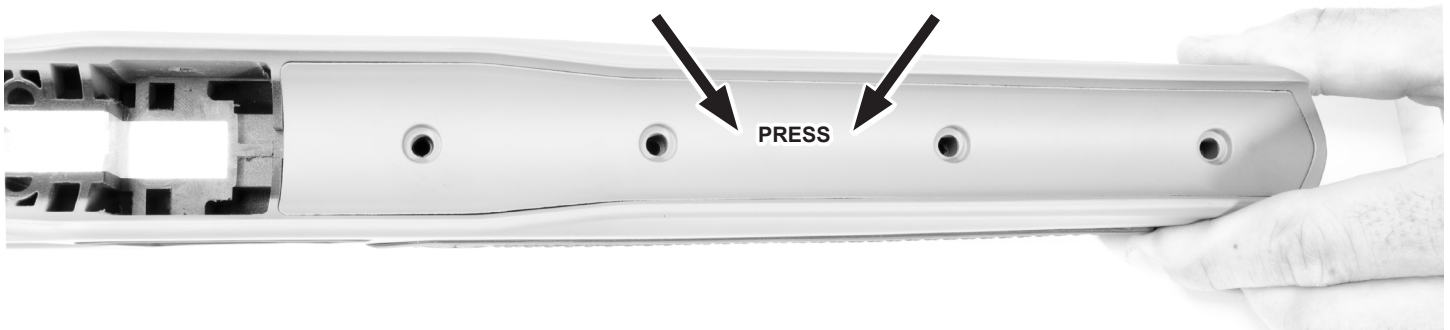
3. Use a screwdriver to push on the barrel cover from the hole of the sling stud and take it off by gently pulling on it.



4. Insert the new barrel cover in the appropriate slot designed for a perfect fit with the barrel cover and the chassis.



5. Press firmly to clip the barrel cover to the chassis. Make sure it is well positioned. The barrel cover must be flush to the chassis.



6. Insert the four (4) screws from step 2.3.A-1 with a Phillips #2 screwdriver and refer to Appendix B for torque specification.
7. Reinstall the bipod stud and refer to Appendix B for torque specification.

B. Add a new bipod stud location (optional)

A second bipod stud location can be added for the user to install a sling or other accessories.

The bipod stud kit is sold separately and come in three (3) different parts.



BIPOD STUD



WASHER

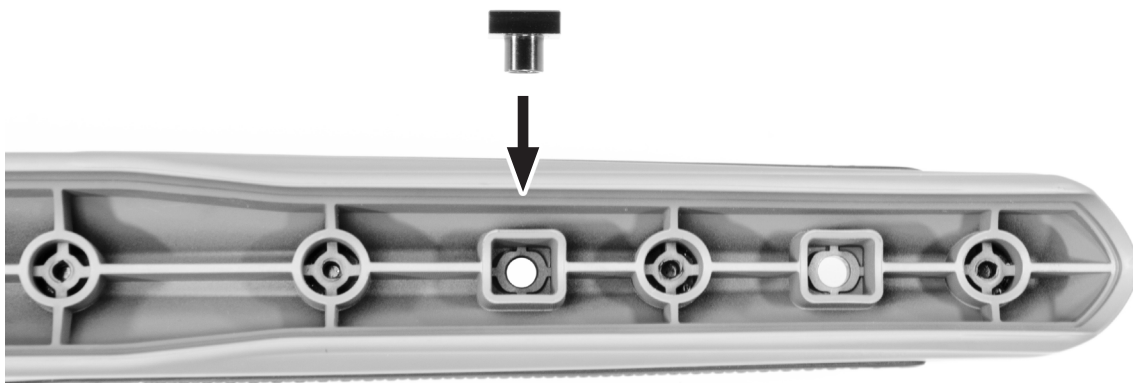


THREADED INSERT

1. Remove the barrel cover. Refer to step 2.3.A for instructions.
2. Use a 1/4" drill (6.35mm) to make a hole through the chassis in the predefined location.



3. Place the threaded insert in the hole and make sure it is completely seated on the plastic.
4. Install the new bipod stud and refer to Appendix B for torque specifications.



5. Reinstall the barrel cover and refer to the step 2.3.A-4 for instructions.

3. CLEANING AND MAINTENANCE

WARNING! Verify the chamber and magazine to make sure there are no cartridges in the firearm prior to any cleaning and maintenance on the firearm.

3.1. Chassis maintenance

1. When tightening fasteners do not over tighten. Where a torque is specified, employ an accurate in-lbs torque wrench. Use correct fitting tools to loosen or tighten fasteners.
2. When operating the controls of the stock, do not use excessive force.
3. To clean the chassis, use a soft brush to remove accumulated sand, mud and debris. Wipe down surfaces using soft rags. Do not use harsh chemicals or any abrasive materials to clean the chassis.
4. Small amounts of a light lubricant can be applied to the stock hinge and locking mechanism.

3.2. Threadlocker application procedure

Your firearm came with a threadlocker liquid that need to be applied on screws prior assembly and torque. The threadlocker will prevent screws loosening from vibration and shock and provide screws lubricity during torque procedure.

- A. Before applying threadlocker, verify that both thread on screws and hole are free from rust, dirt or debris, oil and grease.
- B. For through holes, apply threadlocker directly on screws (fig 1).
- C. For blind holes, apply threadlocker on thread hole (fig 2).

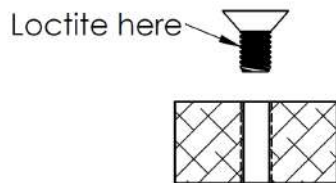


Fig.1 Through Hole

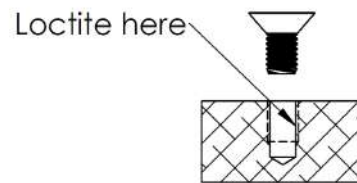


Fig.2 Blind Hole

- D. Once threadlocker is applied, finger tight all screws and then torque them to the appropriate torque.
- E. We recommend to let the threadlocker cure for a 24h period before using your firearm.

4. TECHNICAL AND WARRANTY SUPPORT

For technical and warranty support, the point of contact is Cadex Defence:

CADEX INC.

755 avenue Montrichard, Saint-Jean-sur-Richelieu, Quebec, Canada J2X 5K8

Email: customerservice@cadexinc.com • Tel: 1-888-348-6774 • www.cadexdefence.com



Limited Lifetime Warranty

At Cadex Defence we take a great sense of pride in the products that we design and produce as well as our customer service. If you are experiencing any problems, we appreciate your honesty with the situation and we will do what is right to help you as we really care for our customers.

We warrant products manufactured by Cadex Inc. to be free of defects in material or workmanship/manufacturing for **one year** following the initial owner's purchase. Cadex Defence reserves the right to cover under warranty, at its own discretion, its products for the **lifetime** of the product if we feel that it didn't meet our high standards of performance. Cadex reserves the right to use its discretion to warranty its products in special scenarios that have or may present themselves that are not noted in this document.

Cosmetic wear and normal wear items including but not limited to the barrel, extractors, ejectors, and springs are not covered by the warranty and it is the responsibility of the owner to assure the weapon is properly maintained.

Your Cadex Defence product was manufactured to perform properly with the original parts as designed. Altering or modifying parts is dangerous and will void the warranty. It is your responsibility to make sure any parts you install are made for this firearm, installed correctly, and that neither the originals nor the replacement parts are altered or changed. Firearms are complex precision tools with many parts that must operate correctly with other parts in order to maintain proper and safe operation. Putting your firearm together improperly or with incorrect or modified parts can result in a damaged firearm, serious personal injury, or death to you and/or others through malfunction. Always have a qualified armorer or gunsmith work on your Cadex Defence system or other firearms.

Please have the following information ready. You can contact us via email or toll free at the contact information listed below.

- Product Model
- Serial Number
- Date of Purchase
- Point of Purchase

CADEX INC.

755 Avenue Montrichard, St-Jean-sur-Richelieu, Quebec, Canada, J2X 5K8

customerservice@cadexinc.com

Office: 450-348-6774 (CANADA) • 802-466-4003 (USA)

Toll free: 1-888-348-6774

A message from the owner

For Cadex, customer satisfaction is very important.

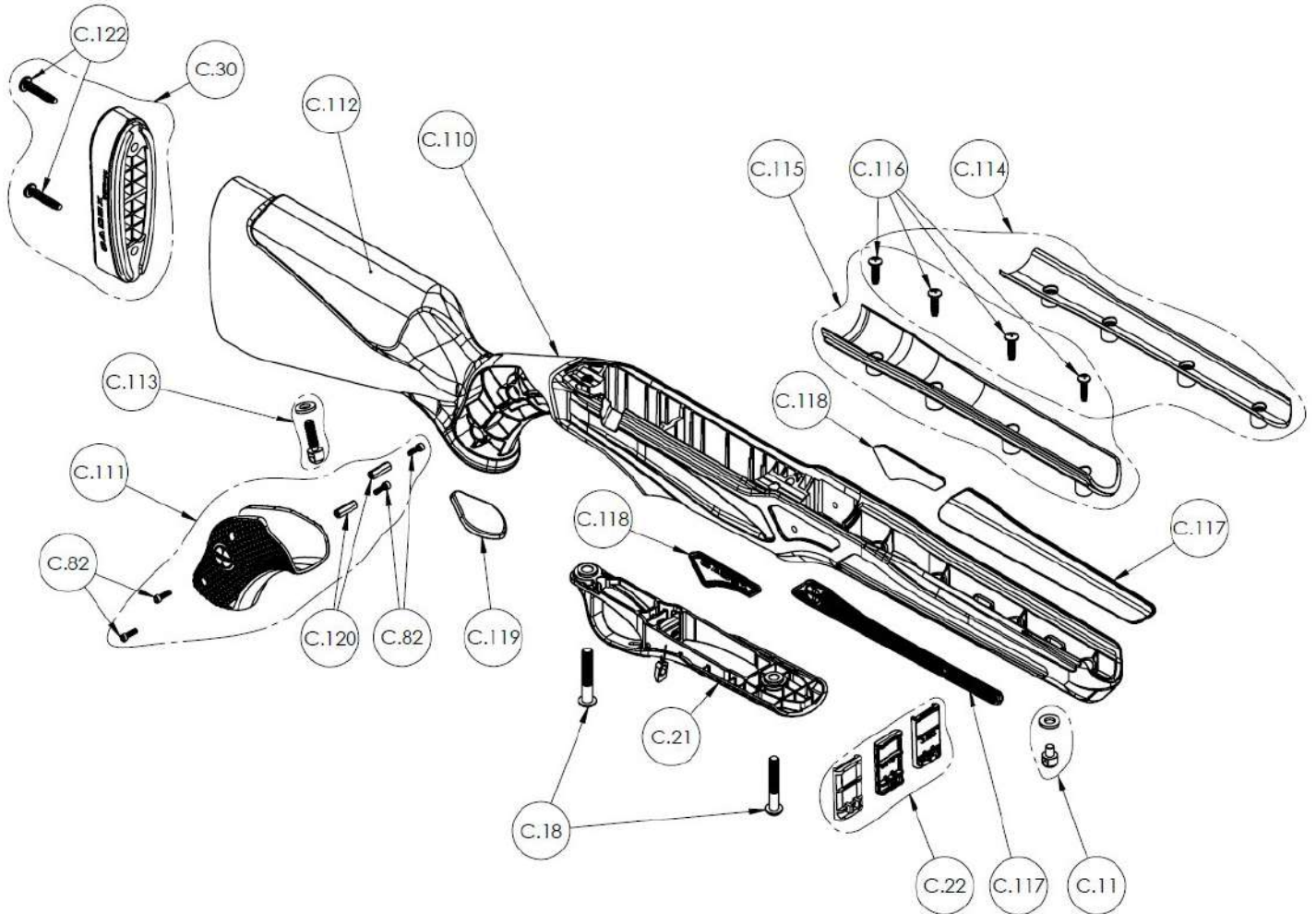
If you experience a problem with one of our dealers or distributors don't wait for the situation to get worse before bringing it to our attention. We firmly believe that with good communication and a little goodwill from both sides we will be able to find a solution to your problem.

Please contact us as soon as possible if you ever encounter any issues with one of our products.

- Serge Dextraze, Cadex CEO

5. APPENDIX A - SPARE PARTS

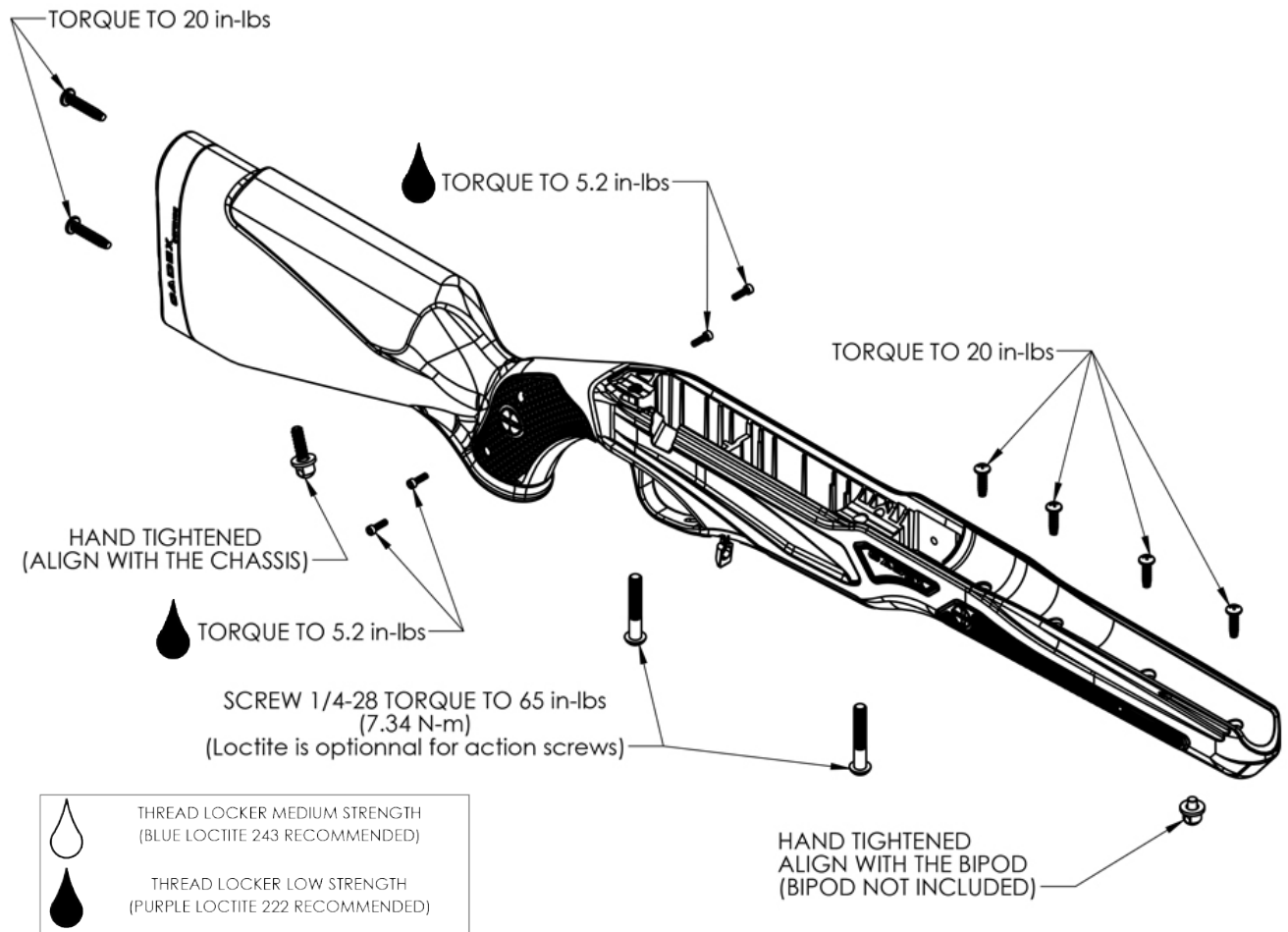
5.1. Chassis spare parts



ITEM	DESCRIPTION	QTY*
C.11	BIPOD STUD (WASHER INCLUDED)	1
C.18	ACTION SCREW KIT (2 SCREWS AND 2 WASHERS)	2
C.21	DETACHABLE BASE (WITH MAGAZINE CATCH)	1
C.22	MAGAZINE SLEEVE	1
C.30	BUTT PAD KIT	1
C.82	SHCS 4-40 X 3/8	4
C.110	TUNDRA STRIKE CHASSIS	1
C.111	TUNDRA STRIKE HANDLE ASSEMBLY	1
C.112	CHEEK PIECE FOAM TUNDRA STRIKE	1
C.113	SLING STUD FOR TUNDRA STRIKE (WASHER INCLUDED)	1
C.114	PLASTIC COVER FOR SPORTER BARREL	1
C.115	PLASTIC COVER FOR CARBON BARREL	1
C.116	PHILLIPS ROUNDED HEAD THREAD FORMING, #8 X 5/8"	4
C.117	FRONT RUBBER PATCH TUNDRA STRIKE	2
C.118	SIDE RUBBER PATCH TUNDRA STRIKE	2
C.119	SOFT STOCK BOTTOM PATCH	1
C.120	THREADED STANDOFF, 3/16" HEX 5/8"L, #4-40 UNC	2
C.122	PHILIPS ROUNDED HEAD THREAD FORMING, #10 X 1"	2

*Quantity may vary depending of chassis model

6. APPENDIX B - RECOMMENDED TORQUE SETTING



*Image for reference only

WARNING!

Regardless of shipping method, Cadex highly recommends checking each preset screws torque preventively.

If your order shipped by plane, and as such, withstood high amounts of vibrations, you MUST verify each preset screws for the right torque before using the weapon by referring to the figure above.

This document contains information that is proprietary to Cadex Inc. Neither this document nor the information contained herein shall be used, duplicated or communicated by any means to any third party, in whole or in part, except with the prior written consent of Cadex Inc. This restrictive legend shall not be altered or obliterated from this document.





CADEX INC.

HEAD OFFICE

755 ave. Montrichard,
Saint-Jean-sur-Richelieu, QC
Canada, J2X 5K8

Tel: 450-348-6774

Toll free: 1-888-348-6774

Fax: 450-348-7157



WWW.CADEXDEFENCE.COM